

TASCAM
TEAC Professional Division

SERVICE MANUAL

FW-1884

Professional Control Surface/FireWire Audio-MIDI Interface

CONTENTS

| | |
|---------------------------------------|----|
| 1. SPECIFICATIONS | 2 |
| 2. BLOCK DIAGRAM | 6 |
| 3. LEVEL DIAGRAM | 7 |
| 4. EXPLODED VIEW AND PARTS LIST | 8 |
| 5. PC BOARDS AND PARTS LIST | 14 |
| 6. INCLUDED ACCESSORIES | 26 |

目次

| | |
|---------------------|----|
| 1. 仕様 | 2 |
| 2. ブロックダイアグラム | 6 |
| 3. レベルダイアグラム | 8 |
| 4. 分解図とパーツリスト | 9 |
| 5. 基板図とパーツリスト | 15 |
| 6. 付属品 | 27 |

INSTRUCTIONS FOR SERVICE PERSONNEL

BEFORE RETURNING APPLIANCE TO THE CUSTOMER, MAKE LEAKAGE-CURRENT OR RESISTANCE MEASUREMENTS TO DETERMINE THAT EXPOSED PARTS ARE ACCEPTABLY INSULATED FROM THE SUPPLY CIRCUIT.

1. SPECIFICATIONS

仕様

Specifications

Analog I/O

Mic input 1-8 (Balanced)

Connector: 3-pin XLR jack x 8
(1: GND, 2: Hot, 3: Cold)
Input impedance: 2.2k ohm
Adjustable Input range: -56dBu (TRIM max) to
-2 dBu (TRIM min)
Maximum gain : +54 dB

Line input 1-8 (Balanced)

Connector: 1/4 inch TRS jack x 8
Input impedance : 10k ohm at LINE/MIC
1M ohm at GUITAR (LINE Input: 8 Switchable)
Adjustable input range: -42 dBu (TRIM max) to
+12 dBu (TRIM min.)
Maximum gain : +54 dB

Insert 1-8 (Unbalanced)

Connector: 1/4 inch TRS jack with tip SW x 8
(T=SEND,R=RETURN, S=GND)supported.

Send

Impedance : 100 ohm
Normal level : -2 dBu
Maximum level : +14 dBu
Return
Impedance: 10k ohm
Normal level : -2 dBu
Headroom : 16 dB

Stereo / Surround monitor output (Balanced)

Connector: 1/4 inch TRS jack x 8
Output impedance: 100 ohm
Nominal output level: +4 dBu
Maximum output level: +20 dBu

Phones output (Stereo)

Connector: 1/4 inch TRS jack
(T = L, R = R, S = GND) x 1
Max output power: 52 mW + 52 mW (32 ohm)

Digital I/O

Digital input (Coaxial)

2ch serial digital audio signal input terminal. ADAT/Optical Input terminal is selectable. In the case of Hi sampling, Hi-speed mode is supported.

Connector: RCA jack x 1
Input impedance: 75ohm
Format: AES3-1992 or IEC60958

Audio bit length:length: 24bit

定格

アナログ入出力

MIC (1~8)入力端子 [バランス]

コネクター: XLR-3-31
(1: GND, 2: HOT, 3: COLD)
入カインピーダンス: 2.2 kΩ
入力レベル: -56 dBu (TRIM max) ~
-2 dBu (TRIM min)
最大ゲイン: +54 dB

LINE IN (1~8)入力端子 [バランス]

コネクター: 6φ TRS ホンジャック
(チップ: HOT, リング: COLD, スリーブ: GND)
入カインピーダンス: 10 kΩ
1 MΩ (LINE IN 8, GUITARポジション時)
入力レベル: -42 dBu (TRIM max) ~
+12 dBu (TRIM min)
最大ゲイン: +54 dB

INSERT (1~8)端子 [アンバランス]

コネクター: 6φ TRS ホンジャック
(チップ: SEND、リング: RETURN、スリーブ: GND)

Send

出カインピーダンス: 100 Ω
規定出力レベル: -2 dBu
最大出力レベル: +14 dBu

Return

入カインピーダンス: 10 kΩ
規定入力レベル: -2 dBu
ヘッドルーム: 16 dB

SURROUND MONITOR (BAL)

(1~8)出力端子 [バランス]

コネクター: 6φ TRS ホンジャック
(チップ: HOT, リング: COLD, スリーブ: GND)
出カインピーダンス: 100 Ω
規定出力レベル: +4 dBu
最大出力レベル: +20 dBu

PHONES出力端子

コネクター: 6φ TRS ホンジャック
(チップ: L, リング: R, スリーブ: GND)
最大出力: 52 mW + 52 mW (32 Ω負荷時)

デジタル入出力 (DIGITAL I/O)

COAXIAL IN端子

(2チャンネルデジタルオーディオ入力用。ハイサンプリング周波数にも対応)

コネクター: RCA ピンジャック
入カインピーダンス: 75 Ω
フォーマット: AES3-1992 (AES/EBU)
またはIEC60958 (S/PDIF) (自動判別)
オーディオビット長: 24ビット

Digital output (Coaxial)

2ch serial digital audio signal output terminal. ADAT/Optical Output is selectable. In the case of Hi sampling, Hi-speed mode is supported.

Connector: RCA jack x 1
 Output impedance: 75 ohm
 Format: IEC60958 (Selectable)
 Audio bit length: 24bit

ADAT/Optical input (Light-pipe)

ADAT optical format digital multi audio or 2CH serial audio signal input terminal. In the case of 2CH serial audio signal, DIGITAL IN (COAXIAL) is selectable.

Connector: Light-pipe optical x 1
 Format: ADAT OPTICAL at ADAT
 AES3 -1992 or IEC60958
 (auto matically detected) at Optical
 Audio bit length : 24bit

ADAT/Optical output (Light-pipe)

ADAT optical format digital multi audio or 2CH serial audio signal output terminal. In the case of 2CH serial audio signal, DIGITAL OUT (COAXIAL) is selectable.

Connector: Light-pipe optical x 1
 Format: ADAT OPTICAL at ADAT
 IEC60958 at Optical
 Audio bit length: 24bit at ADAT
 24bit at Optical

Misc. I/O**Word sync input**(Word clock signal input terminal)

Connector: BNC x 1
 Input impedance: 75 ohm
 Input level: TTL level

Word sync output(Word clock signal output for Word sync)

Connector: BNC x 1
 Output level: TTL level

MIDI input 1-4(MIDI input terminal)

Connector: 5-pin DIN connector
 (conforms to MIDI specifications x 4)
 Format : MIDI

MIDI output 1-4(MIDI output terminal)

Connector: 5-pin DIN connector
 (conforms to MIDI specifications x 4)
 Format : MIDI

FireWire(IEEE 1394 digital interface)

Connector: IEEE 1394 connector x 2
 Format: IEEE 1394
 Transmit rate: 400Mbps

COAXIAL OUT端子

(2チャンネルデジタルオーディオ出力用。ハイサンプリング周波数にも対応。)

コネクター: RCA ピンジャック
 出カインピーダンス: 75 Ω
 フォーマット: IEC60958 (S/PDIF)
 オーディオビット長: 24ビット

ADAT/OPT IN端子

(ADATオプティカルフォーマットデジタルマルチオーディオまたは2チャンネルデジタルオーディオ入力用)

コネクター: オプティカルタイプ
 フォーマット: ADAT OPTICAL/AES3-1992
 (AES/EBU) またはIEC60958
 (S/PDIF) (自動判別)
 オーディオビット長: 24ビット

ADAT/OPT OUT端子

(ADATオプティカルフォーマットデジタルマルチオーディオまたは2チャンネルデジタルオーディオ出力用)

コネクター: オプティカルタイプ
 フォーマット: ADAT OPTICAL IEC60958
 (S/PDIF)
 オーディオビット長: 24ビット

その他の入出力**WORD SYNC IN端子**

コネクター: BNC (アンバランス)
 入カインピーダンス: 75 Ω
 入力レベル: TTL レベル

WORD SYNC OUT端子

コネクター: BNC (アンバランス)
 出力レベル: TTL レベル

MIDI IN (1~4)端子

コネクター: 5 ピンDIN コネクター
 (MIDI 規格準拠)
 フォーマット: MIDI

MIDI OUT (1~4)端子

コネクター: 5 ピンDIN コネクター
 (MIDI 規格準拠)
 フォーマット: MIDI

FireWire (1, 2)端子 (IEEE 1394デジタルインタフェース)

コネクター: IEEE 1394コネクター
 フォーマット: IEEE 1394
 通信速度: 400Mbps

Foots witch

Punch In/Out of DAW application

Connector: Normally-open 1/4-inch TS jack

Overall System Specifications**Sampling frequency**Internal clock : 44.1kHz / 48.0kHz / 88.2kHz /
96.0kHzExternal clock: Word sync input / Digital input /
ADAT input**AD/DA converter****Analog to Digital**Resolution: 24 bit
Dynamic range: 103 dB (Fs=44.1kHz, A-weight)
AD input level Maximum: +8.1dBu (0dBFS)
Nominal: -7.9dBu (-16dBFS)**Digital to Analog**Resolution: 24 bit
Dynamic range: 106 dB (Fs=44.1kHz, A-weight)
Analog output level Maximum: +7.8dBu (0dBFS)
Nominal: -8.2dBu (-16dBFS)**Signal delay**< 1.5 ms (Fs = 48.0kHz. LINE IN to STEREO OUTPUT)
< 0.75 ms (Fs = 96.0kHz. LINE IN to STEREO OUTPUT)**Analog I/O**THD (Level: +4dBu): < 0.005 % (20 Hz - 20 kHz, LINE IN
1 kHz to INSERT SEND)
< 0.008 % (20 Hz - 20 kHz, LINE IN
1 kHz to STEREO OUTPUT)

Frequency response (@ nominal level)

20Hz - 20 kHz : ±0.5 dB,
(MIC/LINE IN to INSERT SEND)20Hz - 40kHz : +0.5dB / -1.0 dB,
(MIC/LINE IN to INSERT SEND)20Hz - 20kHz : ±0.5 dB
(LINE IN to STEREO OUTPUT)20Hz - 40kHz : +0.5dB / -1.5 dB,
(LINE IN to STEREO OUTPUT)Noise level (20Hz - 20kHz, TRIM max, 150 ohm)
< -124 dBu(EIN)

(MIC IN to INSERT SEND)

< -64dBu

(LINE IN to STEREO OUTPUT)

Crosstalk (@ 1kHz)

> 80dB (STEREO OUTPUTS)

FOOT SW端子

(DAWアプリケーションのパンチイン/アウト用)

コネクター: 6φ (2極) ホンジャック

システム仕様**サンプリング周波数**内部クロック: 44.1 kHz / 48.0 kHz /
88.2 kHz / 96.0 kHz外部クロック: WORD SYNC IN入力 /
COAXIAL IN入力 / ADAT/OPT入力**AD/DAコンバーター****AD**分解能: 24 bit
ダイナミックレンジ: 103 dB (Fs=44.1 kHz, A-weight)
AD最大入力レベル: +8.1 dBu (0 dBFS)
AD規定入力レベル: -7.9 dBu (-16 dBFS)**DA**分解能: 24 bit
ダイナミックレンジ: 106 dB (Fs=44.1 kHz, A-weight)
DA最大出力レベル: +7.8 dBu (0 dBFS)
DA規定出力レベル: -8.2 dBu (-16 dBFS)**信号ディレイ**1.5 ms以下 (Fs = 48.0 kHz. LINE IN → STEREO OUTPUT)
0.75 ms以下 (Fs = 96.0 kHz. LINE IN → STEREO OUTPUT)**アナログオーディオ入出力特性**歪率(THD): 0.005%以下 (20 Hz - 20 kHz, LINE IN
1 kHz + 28 dBu入力 → INSERT SEND)
0.008%以下 (20 Hz - 20 kHz, LINE IN
1 kHz + 28 dBu入力 → STEREO OUTPUT)

周波数特性 (規定レベル時):

20 Hz - 20 kHz、 ±0.5 dB
(MIC, LINE IN → INSERT SEND)20 Hz - 40 kHz、 +0.5 dB / -1.0 dB
(MIC, LINE IN → INSERT SEND)20 Hz - 20 kHz、 ±0.5 dB
(LINE IN → STEREO OUTPUT)20 Hz - 40 kHz、 +0.5 dB / -1.5 dB
(LINE IN → STEREO OUTPUT)ノイズレベル (150 Ω、 20 Hz - 20 kHz、 TRIM最大)
-124 dBu以下 (EIN)

[MIC → INSERT SEND]

-64 dBu以下

[(LINE IN → STEREO OUTPUT)]

クロストーク (@ 1 kHz):

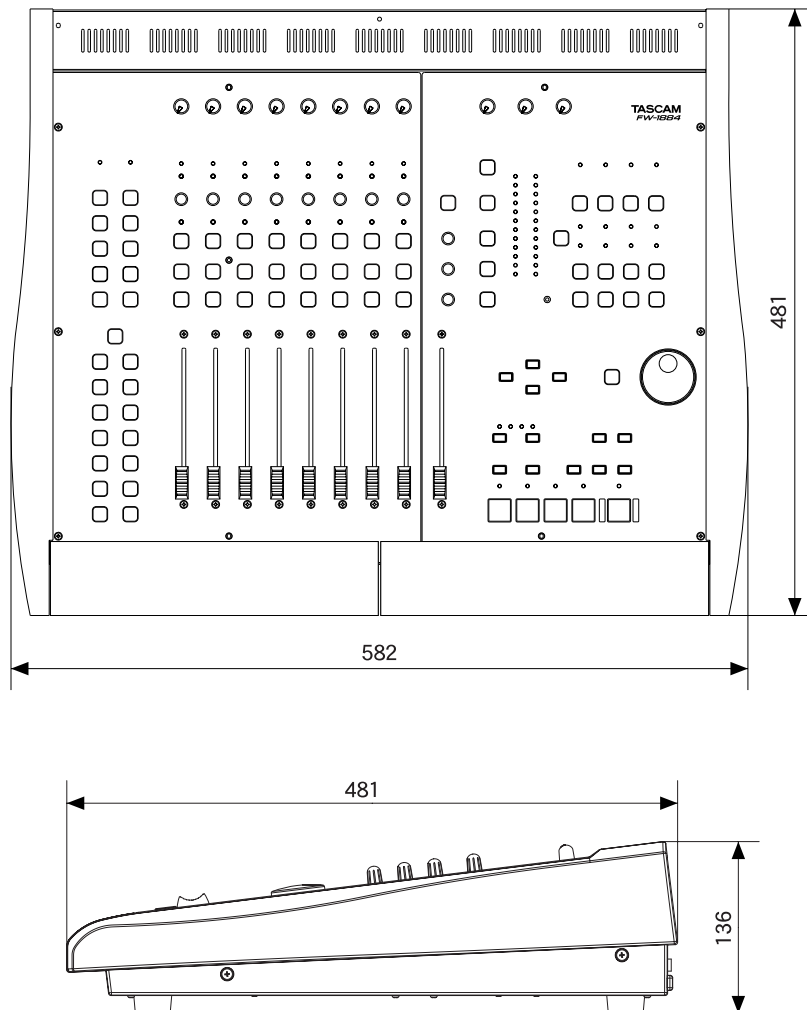
80 dB以上 (STEREO OUTPUT)

Physical specification, etc.

Dimensions W 22.9 x H 5.4 x 18.9
(W 582mm x H 136mm x D 481mm)
Weight 22.7 lbs (10.3 kg)
Power requirements 100V AC, 50/60Hz/100V / 200V type
Power consumption 23 W

機械的仕様

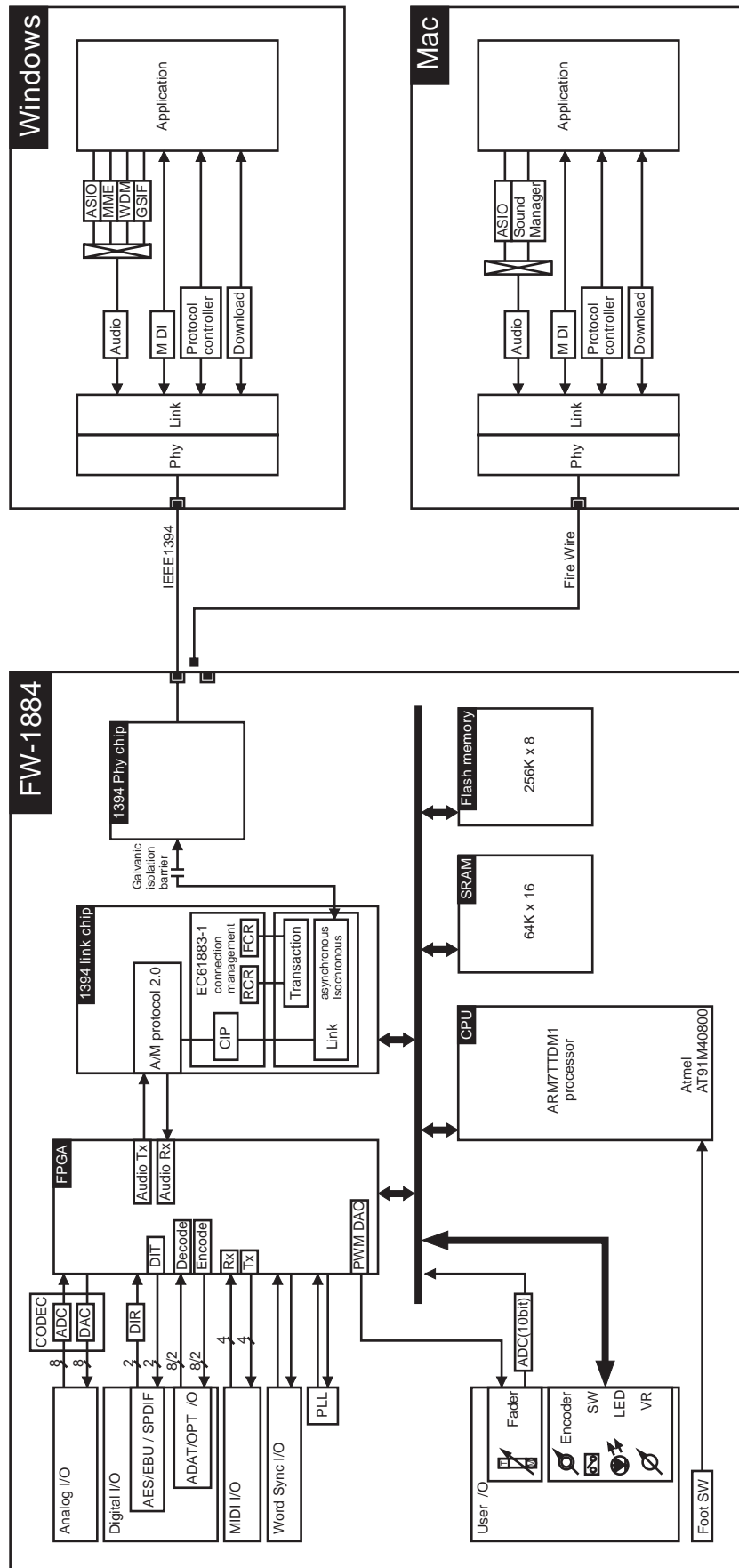
外形寸法： 582(幅) × 136(高さ) × 481(奥行) mm
質量： 10.3 kg
電源： 100 V、50/60 Hz AC
消費電力： 23 W



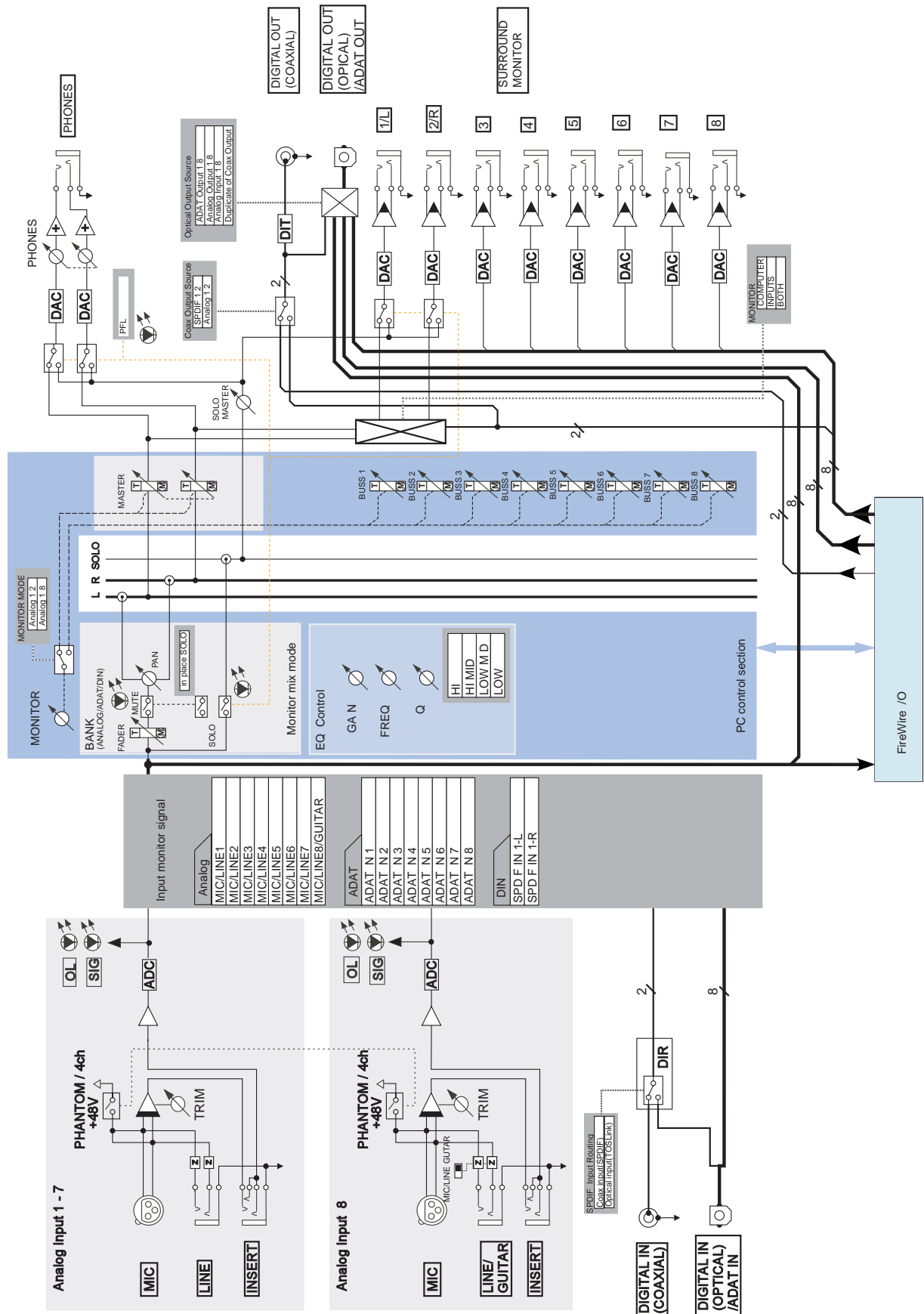
2. BLOCK DIAGRAM

ブロックダイアグラム

SYSTEM BLOCK DIAGRAM

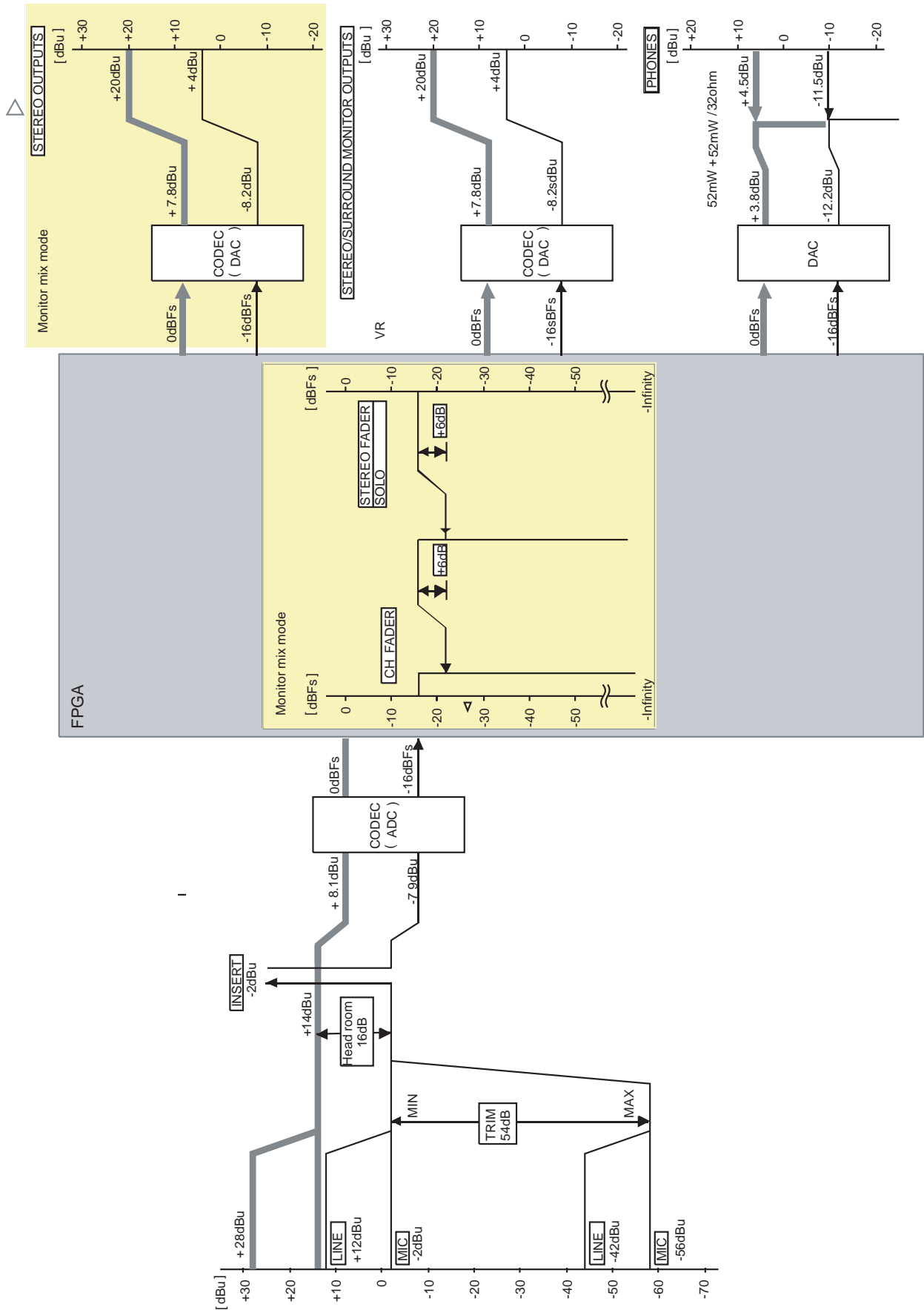


ANALOG BLOCK DIAGRAM



3. LEVEL DIAGRAM

レベルダイアグラム



PARTS LIST SECTION

NOTES

- PC boards shown are viewed from parts side.
- Parts marked with * require longer delivery time.
- The parts with no reference number or no parts number in the exploded views are not supplied.
- As regards the resistors and capacitors, refer to the circuit diagrams contained in the manual.
- △ Parts marked with this sign are safety critical components. They must be replaced with identical components - refer to the appropriate parts list and ensure exact replacement.
- Parts of [] mark can be used only with the version designated.
[J]: JAPAN [US/C]: U.S.A./CANADA [K]: KOREA [E]: EUROPE
[UK]: U.K. [A]: AUSTRALIA

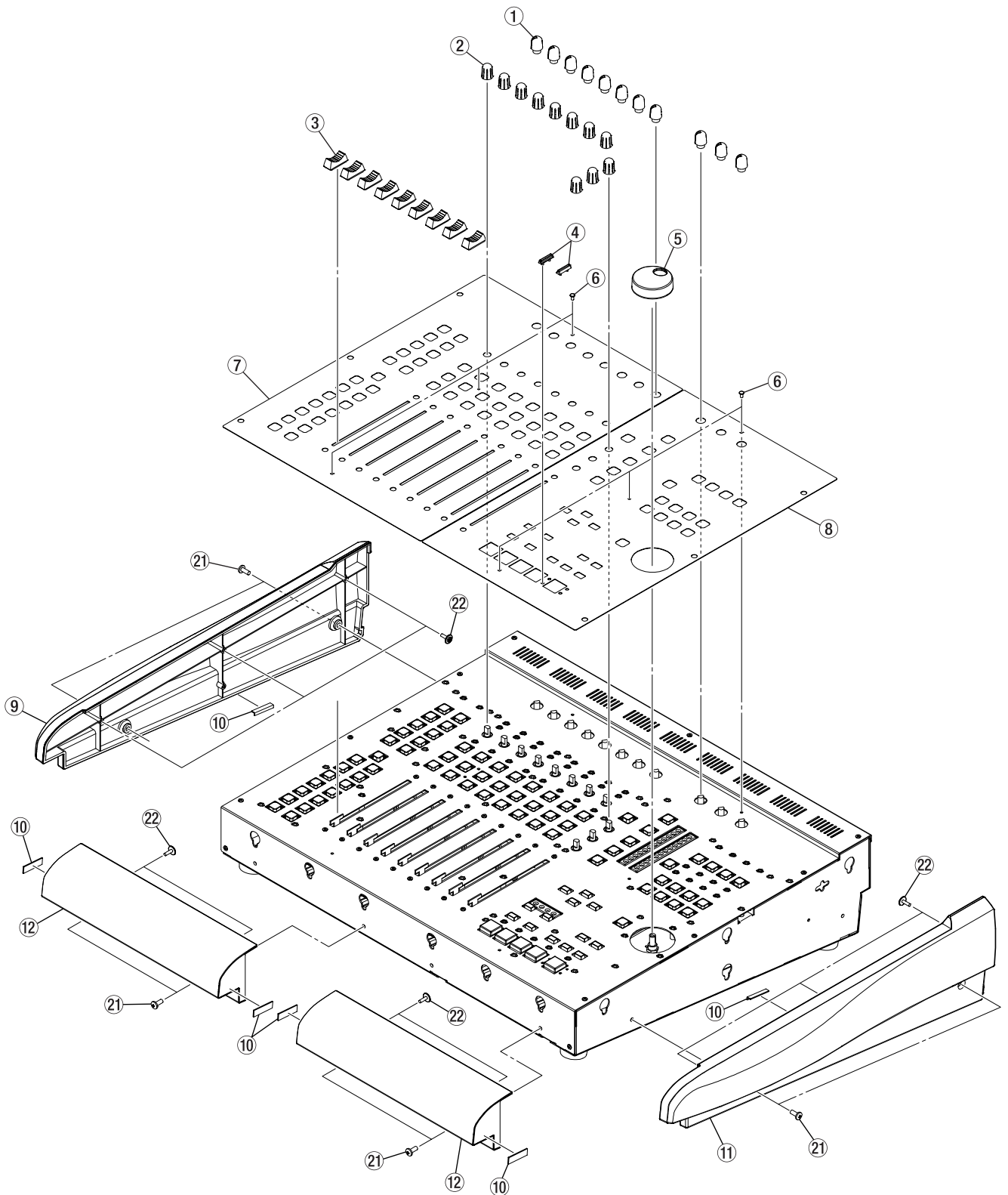
注意

- プリント基板は部品面が示されています。
- *印の部品は納期が若干かかります。
あらかじめご了承ください。
- 分解図に部番のない部品及び品番のない部品は供給しません。
- 標準の抵抗、コンデンサーは省略してあります。
回路図を参照してください。
- △は安全重要部品です。
交換する時は必ずティアック指定の部品を使用してください。
- 仕向先
[J]: JAPAN [US/C]: U.S.A./CANADA [K]: KOREA [E]: EUROPE
[UK]: U.K. [A]: AUSTRALIA

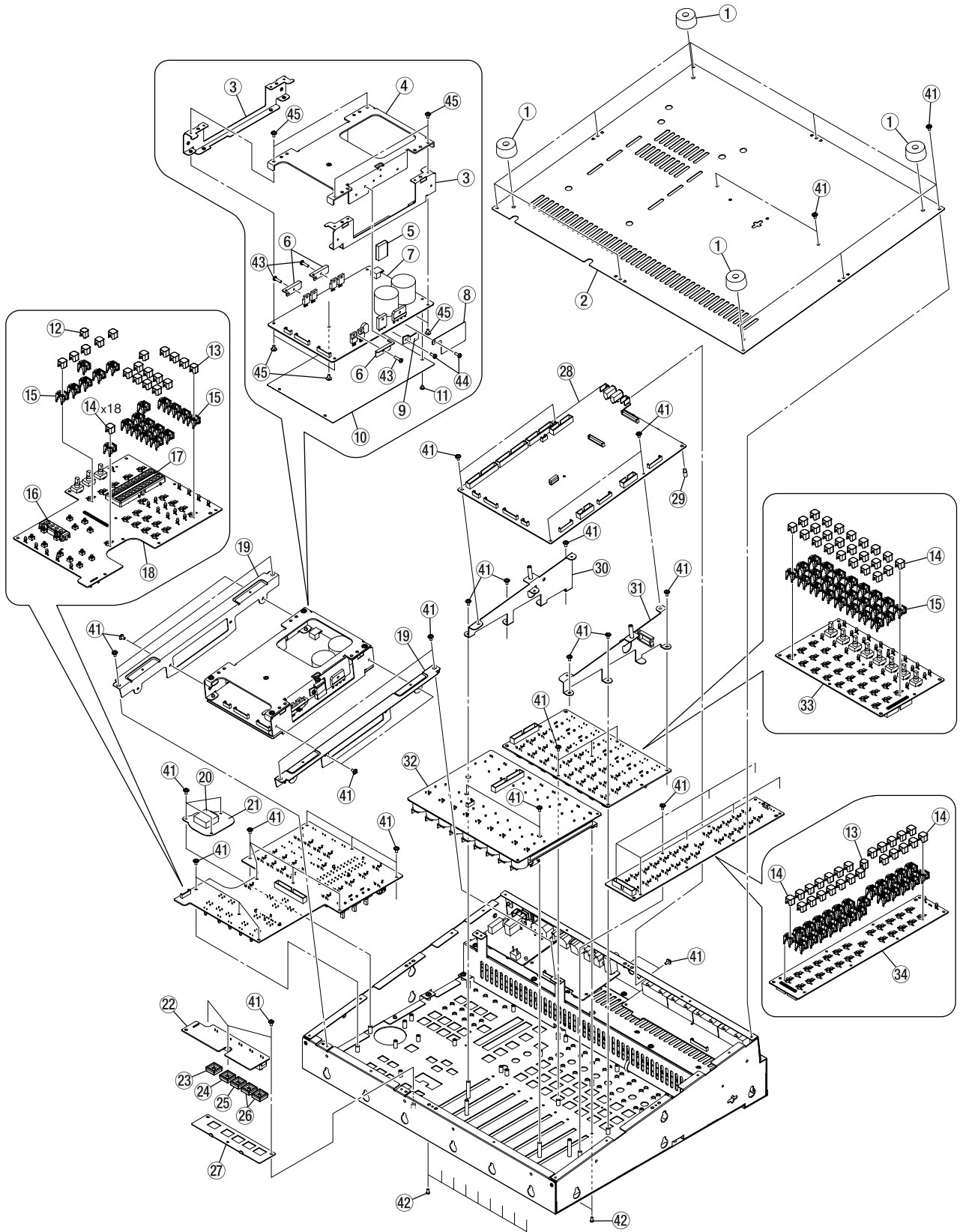
4. EXPLODED VIEW AND PARTS LIST

分解図とパーツリスト

EXPLODED VIEW-1



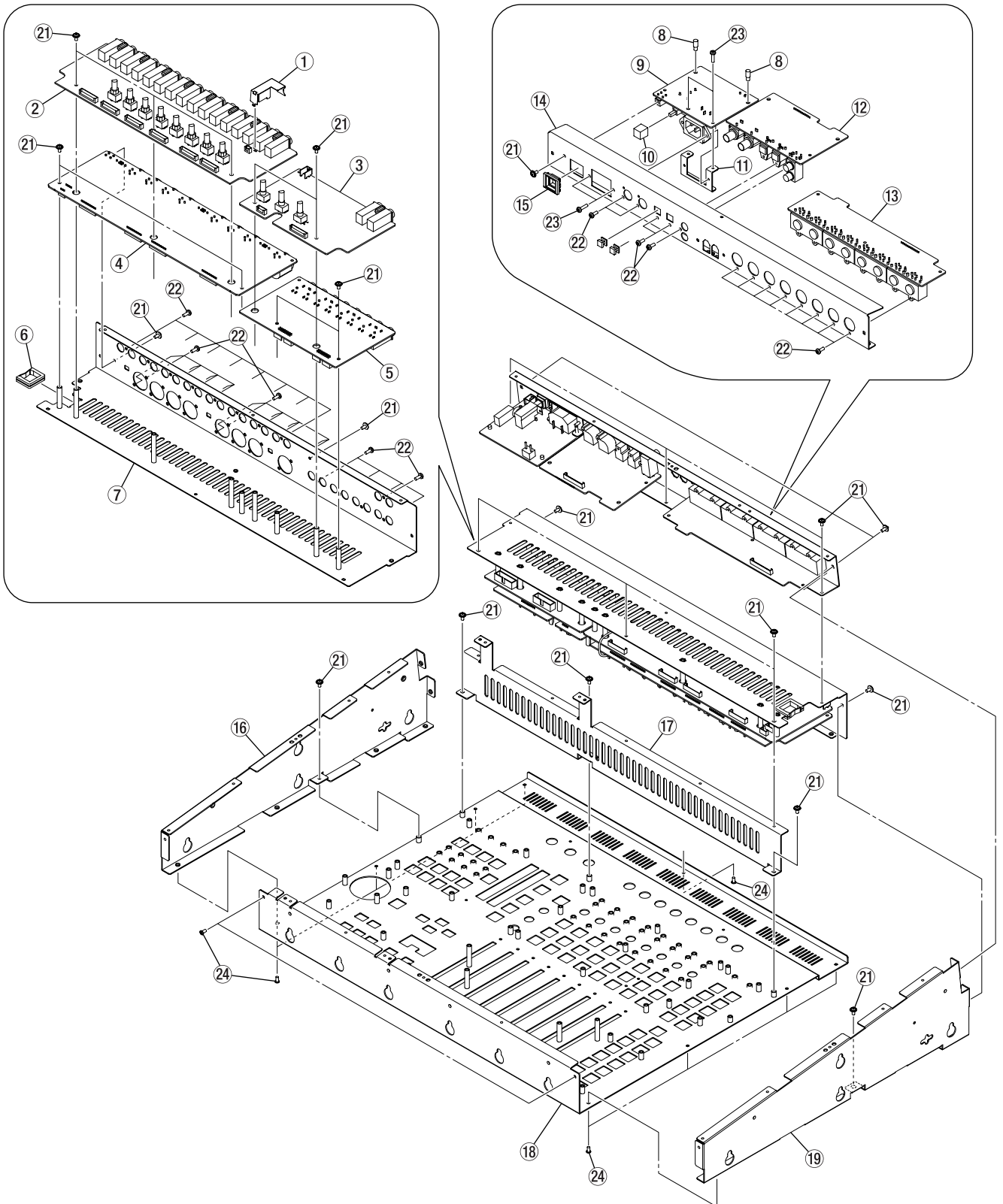
EXPLODED VIEW-2



EXPLODED VIEW-1 & -2

| REF. NO. | PARTS NO. | DESCRIPTION | REMARKS |
|----------|-------------|------------------------------|---|
| 1- 1 | 3M0218300A | KNOB, TRIM N61/N64 | |
| 1- 2 | M01534700A | KNOB, ENCODER N64 | |
| 1- 3 | 9260401001 | S-VR KNOB, FW1884 | |
| 1- 4 | M00207800A | ESCUTCHEON GUARD | |
| 1- 5 | M01352900B | KNOB, JOG US-224 | |
| 1- 6 | 3M0182300A | PUSH RIVETS P2632 | |
| 1- 7 | M01533400B | SHEET, LEFT | |
| 1- 8 | M01533500B | SHEET, RIGHT | |
| 1- 9 | M01534400A | PANEL, SIDE L | |
| 1-10 | M01643200A | SHEET, PANEL FRONT | |
| 1-11 | M01534500A | PANEL, SIDE R | |
| 1-12 | M01534600A | PANEL, FRONT | |
| 1-21 | 3B0700210A | SCREW BH M4*10 (BLK) | |
| 1-22 | B00134000A | SCREW PTITE 3*10D10 ZNY | |
| 2- 1 | 3M0187400A | FOOT FF015 | |
| 2- 2 | M01534300A | CHASSIS, BOTTOM | |
| 2- 3 | M01532400A | BRACKET, POWER | |
| 2- 4 | M01532500A | HEAT SINK POWER | |
| 2- 5 | 3M0154500A | TUBE, TO-3PCV | |
| 2- 6 | M01532700A | BRACKET, TR | |
| 2- 7 | E95162920A | PCB ASSY, POWER FW T/C | CAUTION(Refer to page 18) |
| 2- 8 | E95162950A | PCB ASSY, POWER FW EUR | CAUTION(Refer to page 18) |
| 2- 9 | M01650300A | SHIELD SHEET, DIODE | |
| 2-10 | 3M0155200A | BRACKET, TRK-1 | |
| 2-11 | M01532600A | SHIELD SHEET, POWER | |
| 2-12 | 3M0155300A | PUSH RIVET SR345 | |
| 2-13 | M01531701A | BUTTON, RED | |
| 2-14 | M01531702A | BUTTON, GRY | |
| 2-15 | M01531700A | BUTTON, CLEAR1-21 | |
| 2-16 | M01603900A | BRACKET, LED B | |
| 2-17 | M01603800A | BRACKET, LED A | |
| 2-18 | | PCB, CONT FW..... | PCB ASSY, GATHER CONT FW (Refer to page 20) |
| 2-19 | M01534200A | FRAME, POWER | |
| 2-20 | E00804900A | ENCODER, EC202A128A | |
| 2-21 | M01533800A | BRACKET, JOG | |
| 2-22 | | PCB, TRANSPORT FW | PCB ASSY, GATHER CONT FW (Refer to page 20) |
| 2-23 | 3M0218000A | BUTTON REC | |
| 2-24 | 3M0217900A | BUTTON PLAY | |
| 2-25 | 3M0217800A | BUTTON STOP | |
| 2-26 | 3M0217700A | BUTTON REW | |
| 2-27 | M01531500A | BRACKET, TRANSPORT | |
| 2-28 | E95162800A | PCB ASSY, MAIN FW | |
| 2-29 | 3M0182100A | SPACER SUPPORT MC-8 | |
| 2-30 | M01534000A | BRACKET, MAEN R | |
| 2-31 | M015339-00A | BRACKET, MAEN L | |
| 2-32 | E951682-00A | PCB ASSY, FADER RM FW | |
| 2-33 | E951624-00A | PCB ASSY SELECT FW | |
| 2-34 | | PCB, MODE FW..... | PCB ASSY, GATHER CONT FW (Refer to page 20) |

EXPLODED VIEW-3



EXPLODED VIEW-3

| REF. NO. | PARTS NO. | DESCRIPTION | REMARKS |
|----------|------------|----------------------------|---|
| 3- 1 | M01652500A | SHIELD CASE, JACK | |
| 3- 2 | | PCB, INPUT FW..... | .PCB ASSY, GATHER IN FW (Refer to page 23) |
| 3- 3 | | PCB, PHONE FW..... | .PCB ASSY, GATHER OUT FW (Refer to page 22) |
| 3- 4 | | PCB, MIC FW..... | .PCB ASSY, GATHER IN FW (Refer to page 23) |
| 3- 5 | | PCB, OUTPUT FW..... | .PCB ASSY, GATHER OUT FW (Refer to page 22) |
| 3- 6 | 3M0217600A | BUSHING SQB-3 | |
| 3- 7 | M01533000A | BRACKET, ANALOG | |
| 3- 8 | 3M0182100A | SPACER SUPPORT MC-8 | |
| 3- 9 | | PCB, INLET FW..... | .PCB ASSY, GATHER OUT FW (Refer to page 22) |
| 3-10 | 5801503800 | BUTTON EJECT (P-N15-A) | |
| 3-11 | 9260320701 | BRACKET, PWRSW | |
| 3-12 | | PCB, SYNC FW..... | .PCB ASSY, GATHER OUT FW (Refer to page 22) |
| 3-13 | | PCB, MIDI FW..... | .PCB ASSY, GATHER OUT FW (Refer to page 22) |
| 3-14 | M01533200A | BRACKET, DIGITAL | |
| 3-15 | 5801486601 | ESCUTCHEON (D P-N15-A) | |
| 3-16 | M01533700A | CHASSIS, SIDE R | |
| 3-17 | M01533100A | PLATE, ANALOG | |
| 3-18 | M01533300A | CHASSIS, TOP | |
| 3-19 | M01533600A | CHASSIS, SIDE L | |
| 3-21 | 3B0011306A | SCREW, J. S. M3X6 NI | |
| 3-22 | 3B0702408A | SCREW BPP M3X8 (N1) | |
| 3-23 | 3B0700112A | SCREW BPB M3*12 (N1) | |
| 3-24 | 3B0700604A | SCREW WHIS BIND M3*4 (BLK) | |

5. PC BOARDS AND PARTS LIST

基板図とパーツリスト

MAIN FW PCB ASSY

| REF. NO. | PARTS NO. | DESCRIPTION |
|----------|-------------|---------------------------|
| | *E95162800A | PCB ASSY, MAIN FW |
| | | PCB, MAIN FW |
| D1, D2 | 9174027030 | LED KP-1608IT |
| D3 | 3S007224 | DI, FM4002 CHIP |
| D4 | 3S007164 | DIODE, RB160L-60 |
| D5 | 9174026830 | LED KP-1608YT |
| D7 | 9174027030 | LED KP-1608IT |
| D8, D10 | 9165028930 | DIODE, HVC376B |
| D9 | 3S002984 | DIODE, 1SS355 TE-17 TP |
| D11-D52 | 3S002984 | DIODE, 1SS355 TE-17 TP |
| D53 | 3S007234 | ZDI, 39V 02CZ39 CHIP |
| D54-D57 | 3S007244 | DI, SB05-05CP CHIP |
| J1, J2 | 3E021540 | CONNECTOR, 1394UR-06 |
| L1 | 3E021554 | COIL, ELLATV470M |
| L2, L3 | 3E021564 | COIL, B5W-857CM-0009 |
| L4, L5 | 5286051500 | COIL, CHIP 2.7UH K LK2125 |
| L6-L9 | 3E020884 | COIL, LQH4C100K04 |
| L10 | 3E021554 | COIL, ELLATV470M |
| L11-L14 | 3E020884 | COIL, LQH4C100K04 |
| P1 | 3E029430 | PIN, HEADER 2.54MM 1*3P |
| P2, P8 | 9144510010 | CONNECTOR 2316S-40G |
| P3 | 3E023280 | CONNECT, 12P A2502WV WHT |
| P4 | 3E010360 | CONNCT PLUG B 4B-PH-K-S |
| P5 | 9144546110 | CONNECTOR 2316S-26G |
| P6 | 9144521010 | CN 2316S-34G |
| P7 | 3E023270 | CONNECT, 11P A2502WV WHT |
| P14 | 3E022080 | CONNECT, 12P A2001WV WHT |
| P15, P17 | 9144523710 | CN 2316S-16G |
| P16 | 3E022230 | CONNECT, 12P A2001WV RED |
| P18 | 3E023400 | CONNECT, 9P A2502WV RED |
| P19 | 3E029450 | PIN, HEADER 2.54MM 2*4P |
| P24 | 3E029460 | PIN, HEADER 2.54MM 2*10P |
| P25 | 3E023260 | CONNECT, 10P A2502WV WHT |
| P26 | 3E023250 | CONNECT, 9P A2502WV WHT |
| P27 | 3E023200 | CONNECT, 4P A2502WV WHT |
| P28 | 3E022010 | CONNECT, 5 P A2001WV WHT |
| P29 | 3E029440 | PIN, HEADER 2.54MM 1*5P |
| Q1 | 3S006984 | DTR, DTA124EKAT-146 |
| Q2 | S0018524 | TR 2SC3661 |
| Q3, Q4 | 3S006984 | DTR, DTA124EKAT-146 |
| Q13-Q20 | S0018524 | TR 2SC3661 |
| Q21 | 3S008974 | TR, 2SB12600 CHIP |
| Q22, Q23 | 3S007274 | TR, 2SC2873Y (CHIP) |
| SW2, SW1 | 9136003020 | TACT SW EVQ11L05R |
| TR1 | 3E021580 | TRANS, EEH116 |
| U1 | 3S007284 | IC, MAX809SEUR-T |
| U2 | S0050193 | IC, XC9536XL-10PC44C |
| U3 | 3S007304 | IC, MX29LV400TTC-70 |
| U4 | 3S007314 | IC, AT91M42800A-33A1 |
| U5 | 3S009474 | IC, CY7C1041CV33-12ZCT |
| U6 | 3S007334 | IC, PDI1394L40BE |
| U7 | 3S007344 | IC, 4N37S |
| U8 | 3S007354 | IC, LM2574M-3.3 |

MAIN FW PCB ASSY

| REF. NO. | PARTS NO. | DESCRIPTION |
|----------|------------|--------------------------|
| U9 | 3S007364 | IC, PDI1394P23BD |
| U10 | S0050203 | IC, XC2S100-5PQ208C |
| U11 | 3S007134 | IC, NJM2870F33 |
| U12, U14 | 9167068030 | IC, MC74HC4046ADR2 (16P) |
| U13 | 3S006664 | IC, TC74VHCU04F (14P) |
| U15 | 3S007384 | IC, AK4117VF |
| U16 | 3S006874 | IC, PLL1700E |
| U17-U40 | 3S005364 | IC, NJM4580M |
| U41-U44 | 3S007394 | IC, AK4528VF |
| U45 | 3S007404 | IC, AK4380VT |
| U46 | 3S005364 | IC, NJM4580M |
| U47 | 3S007414 | IC, M5237ML |
| U48 | 3S007424 | IC, LM29371MP-2.5 |
| U49 | 3S006844 | IC, NJM7805DL1A-TE1 |
| U51 | 3S007434 | IC, SN74LV573ANSR |
| U52 | 9167051630 | IC, TD62M8600F |
| U53 | 3S008994 | IC, SN74LV00APWR |
| U54, U55 | 3S009004 | IC, SN74LV08APWR |
| U56-U59 | 3S008994 | IC, SN74LV00APWR |
| X1 | 9173019130 | XTAL 24.576MHZ SDS |
| X2 | 9173018830 | CRYSTAL 27MHZ LIM55A |

GATHER CONT FW PCB ASSY

| REF. NO. | PARTS NO. | DESCRIPTION |
|------------|-------------|--------------------------|
| | *E95162300A | PCB ASSY GATHER CONT FW |
| | | PCB, CONT FW |
| D301-D303 | 9174027620 | LED, SLR-332DU T32 (ORG) |
| D304, D313 | E021612 | LED, SLR-342DU TC7 |
| D305-D308 | 3E021622 | LED, SLR-342MG TC7 |
| D309, D318 | 3E021602 | LED, SLR-342VR TC7 |
| D310-D312 | 9174027620 | LED, SLR-332DU T32 (ORG) |
| D314-D317 | 3E021622 | LED, SLR-342MG TC7 |
| D319-D322 | 9174027620 | LED, SLR-332DU T32 (ORG) |
| D323-D326 | 3E021622 | LED, SLR-342MG TC7 |
| D327, D335 | 3E021602 | LED, SLR-342VR TC7 |
| D328-D330 | 9174027620 | LED, SLR-332DU T32 (ORG) |
| D331 | 3E021612 | LED, SLR-342DU TC7 |
| D332-D334 | 3E021622 | LED, SLR-342MG TC7 |
| D336, D337 | 9174027620 | LED, SLR-332DU T32 (ORG) |
| D338, D339 | 3E021612 | LED, SLR-342DU TC7 |
| D340-D342 | 3E021622 | LED, SLR-342MG TC7 |
| D343, D350 | 3E021602 | LED, SLR-342VR TC7 |
| D344, D351 | 9174027620 | LED, SLR-332DU T32 (ORG) |
| D345, D346 | 3E021612 | LED, SLR-342DU TC7 |
| D347-D349 | 3E021622 | LED, SLR-342MG TC7 |
| D352, D353 | 3E021612 | LED, SLR-342DU TC7 |
| D354-D356 | 3E021622 | LED, SLR-342MG TC7 |
| D357 | 3E021602 | LED, SLR-342VR TC7 |
| D358 | 9174027620 | LED, SLR-332DU T32 (ORG) |
| D359, D360 | 3E021612 | LED, SLR-342DU TC7 |
| D361-D363 | 3E021622 | LED, SLR-342MG TC7 |
| D365-D370 | 3S000241 | DI, 1SS133 T-77 |
| D372-D376 | 3S000241 | DI, 1SS133 T-77 |
| D378-D382 | 3S000241 | DI, 1SS133 T-77 |
| D384-D388 | S000241 | DI, 1SS133 T-77 |
| D390-D412 | 3S000241 | DI, 1SS133 T-77 |
| P301 | 9144510010 | CONNECTOR 2316S-40G |
| P302 | 3E023220 | CONNECT, 6P A2502WV WHT |
| Q301-Q310 | 9163018420 | DTR, DTC123ES |
| SW301-304 | 9136003020 | TACT SW EVQ11L05R |
| SW305 | 3E018241 | SW, TACT SKHHDAA010 |
| SW306-308 | 3E021640 | ENCODER, EC12E24104A6 |
| SW309-311 | 9136003020 | TACT SW EVQ11L05R |
| SW312, 313 | 3E018241 | SW, TACT SKHHDAA010 |
| SW314-316 | 9136003020 | TACT SW EVQ11L05R |
| SW317, 318 | 3E018241 | SW, TACT SKHHDAA010 |
| SW319-321 | 9136003020 | TACT SW EVQ11L05R |
| SW322 | 3E018241 | SW, TACT SKHHDAA010 |
| SW323, 324 | 9136003020 | TACT SW EVQ11L05R |
| SW325, 326 | 3E018241 | SW, TACT SKHHDAA010 |
| SW327, 328 | 9136003020 | TACT SW EVQ11L05R |
| SW329, 330 | 3E018241 | SW, TACT SKHHDAA010 |
| SW331, 334 | 9136003020 | TACT SW EVQ11L05R |
| SW332, 333 | 3E018241 | SW, TACT SKHHDAA010 |
| SW335 | 3E018241 | SW, TACT SKHHDAA010 |
| SW336 | 9136003020 | TACT SW EVQ11L05R |

GATHER CONT FW PCB ASSY

| REF. NO. | PARTS NO. | DESCRIPTION |
|-----------|------------|--------------------------|
| | | PCB, MODE FW |
| D1-D24 | 9174027620 | LED, SLR-332DU T32 (ORG) |
| D26, D52 | 3E021602 | LED, SLR-342VR TC7 |
| D27-D51 | 3S000241 | DI, 1SS133 T-77 |
| P1 | 3E023190 | CONNECT, 3P A2502WV WHT |
| P2 | E00771700A | HARNESS ASSY, MAI-MOD |
| Q1-Q4 | 9163018420 | DTR, DTC123ES |
| SW1-SW25 | 9136003020 | TACT SW EVQ11L05R |
| | | PCB, TRANSPORT FW |
| P101 | E00771600A | HARNESS ASSY, TRANSPORT |
| SW101-105 | 9135041400 | PUSH SW, SKBMFA000A-TK |

FADER RM FW PCB ASSY

| REF. NO. | PARTS NO. | DESCRIPTION |
|------------|-------------|-------------------------|
| | *E95168200A | PCB ASSY, FADER RM FW |
| | | PCB, FADER RM FW |
| D101-D103 | 3S002984 | DIODE, 1SS355 TE-17 TP |
| D201-D203 | 3S002984 | DIODE, 1SS355 TE-17 TP |
| D301-D303 | 3S002984 | DIODE, 1SS355 TE-17 TP |
| D401-D403 | 3S002984 | DIODE, 1SS355 TE-17 TP |
| D501-D503 | 3S002984 | DIODE, 1SS355 TE-17 TP |
| D601-D603 | 3S002984 | DIODE, 1SS355 TE-17 TP |
| D701-D703 | 3S002984 | DIODE, 1SS355 TE-17 TP |
| D801-D803 | 3S002984 | DIODE, 1SS355 TE-17 TP |
| D901-D903 | 3S002984 | DIODE, 1SS355 TE-17 TP |
| MF101, 201 | R00979400A | VAR, RES 5KB T-SENSE |
| MF301, 401 | R00979400A | VAR, RES 5KB T-SENSE |
| MF501, 601 | R00979400A | VAR, RES 5KB T-SENSE |
| MF701, 801 | R00979400A | VAR, RES 5KB T-SENSE |
| MF901 | R00979400A | VAR, RES 5KB T-SENSE |
| P1 | 9144510010 | CONNECTOR 2316S-40G |
| P2 | 3E023350 | CONNECT, 4P A2502WV RED |
| U1, U3 | 3S007484 | IC, SN74LV541ANS |
| U10 | 3S005344 | IC, NJM072BM |
| U101, U301 | S0035334 | IC, BA5983FM |
| U102, U302 | S0023994 | IC, NJM4565M-T1 |
| U2, U4 | 3S005344 | IC, NJM072BM |
| U201, U401 | S0023994 | IC, NJM4565M-T1 |
| U5 | 3S007464 | IC, SN74LV165ANSR |
| U501, U701 | S0035334 | IC, BA5983FM |
| U502, U702 | S0023994 | IC, NJM4565M-T1 |
| U6 | 3S007444 | IC, TLV1543CDW |
| U601, U801 | S0023994 | IC, NJM4565M-T1 |
| U7, U9 | 3S005344 | IC, NJM072BM |
| U8 | 3S007494 | IC, LM2937IMP-3.3 |
| U81, U82 | 3S007454 | IC, SN74LV14ANSR |
| U83-U85 | 9167065530 | IC, HD74LV86AFPPEL |
| U901 | S0035334 | IC, BA5983FM |
| U902 | S0023994 | IC, NJM4565M-T1 |

GATHER OUT FW PCB ASSY

| REF. NO. | PARTS NO. | DESCRIPTION |
|------------|--------------|----------------------------|
| | *E95162700A | PCB ASSY, GATHER OUT FW |
| | | PCB, OUTPUT FW |
| J1-J4 | 9143385010 | CPJ-066-005 |
| P3 P4 | E00772500A | HARNESS ASSY, MAI-OUT |
| | | PCB, PHONE FW |
| D101, D201 | 3S000241 | DI, 1SS133 T-77 |
| J5 | 9143385010 | CPJ-066-005 |
| MB2 | M01510100A | BRACKET, PCB-A |
| P100 P200 | E00772400B | HARNESS ASSY, MAI-PHO RED |
| Q101, Q201 | 3S006232 | TR, 2SC-2878A TP |
| R136, R137 | 3R020150 | RN, METAL OXIDE 1/2W 100HM |
| U101, U201 | 3E013130 | FILTER, EMT103DT |
| U102 | 3S004860 | IC NJM4580L (SIP) |
| VR1 | 9172038700 | VR RK09K12CZ007 10KAX2 |
| VR2, VR3 | 3R017500 | VR, RK09D1130C49 5K |
| | | PCB, MID1 FW |
| D001-D004 | 3S000241 | DI, 1SS133 T-77 |
| J001-J004 | 9144437001 | MINI DIN JACK HDC-052A-12 |
| P001 | E00772700A | HARNESS ASSY, MAI-MID |
| Q001-Q004 | 9163018420 | DTR, DTC123ES |
| U001-U004 | 3S006780 | PHOTO COUPLER, PC-900 |
| U005-U012 | 3E013950 | FILTER, EMT102BT |
| | | PCB, SYNC FW |
| D901-D904 | 3S000241 | DI, 1SS133 T-77 |
| J901 | 9144522100 | 2RCA HSP-242 V2-23 |
| J902, J903 | 9144488000 | BNC COH2201-A |
| P901 | E00772800A | HARNESS ASSY, MAI-SYN |
| U901 | 3S007654 | IC, TC74ACT04P(14P) |
| U902 | 3E027222 | FILTER, EXCEMT101BT TP |
| U903 | 3E027222 | FILTER, EXCEMT101BT TP |
| U904 | 5220084800 | IC DGTL SN74S140N |
| U905 | 3S007710 | IC, GP1FA553RZ |
| U906 | 3S007720 | IC, GP1FA553TZ |
| | | PCB, INLET FW |
| C1-C3 | △ 3C020750 | CQ, 0.1UFAC250V |
| C4 | △ 9120000101 | SPARK KILLER 0.0047M 250V |
| C5, C6 | △ 3C020830 | CC, 2200PF AC250V |
| D1 | △ 3E021860 | SURGE ABSORBER, DC470V ERZ |
| F1 | 3E006220 | FUSE HOLDER 5.0 FUSE |
| F1 | △ 3E021830 | FUSE, SLOWBLOW AC250V 5A |
| L1, L2 | △ 3E021750 | CM COIL, 2.2MH 1.3A LF2020 |
| MB1 | M01510100A | BRACKET, PCB-A |
| P1 | △ E0076040 | AC, INLET M1908A |
| P2 | E00773400A | HARNESS ASSY, INL-POW |
| S1 | △ 9135037200 | SW, SFDLB11M7U TK |

GATHER IN FW PCB ASSY

| REF. NO. | PARTS NO. | DESCRIPTION |
|------------|-------------|-------------------------|
| | *E95162600A | PCB ASSY, GATHER IN FW |
| | | PCB, GATHER IN FW |
| J1-J5 | 3E021650 | JACK, CPJ066-40-5 |
| P1-P4 | E00773300A | HARNES ASSY, INP-MIC |
| P5 | E00772100A | HARNES ASSY, MAI-IN1 |
| P6 | E00772200A | HARNES ASSY, MAI-IN2 |
| R102 R202 | 3R017490 | VR, 20K RK09D1130C4B |
| R302 R402 | 3R017490 | VR, 20K RK09D1130C4B |
| R502 R602 | 3R017490 | VR, 20K RK09D1130C4B |
| R702 R802 | 3R017490 | VR, 20K RK09D1130C4B |
| | | PCB, MIC FW |
| | M01652500A | SHIELD CASE, JACK |
| J7-J8 | 3E021650 | JACK, CPJ066-40-5 |
| J9-J16 | 3E021930 | JACK, XLR NC3FAH1-0 |
| MB1 | M01510100A | BRACKET, PCB-A |
| P11 | E00772300A | HARNES ASSY, MODE-MA1 |
| P13 | E00833400A | HARNES ASSY, INP-MIC2 |
| Q101, Q201 | S0039452 | TR, 2SA1084E |
| Q102, Q202 | S0039452 | TR, 2SA1084E |
| Q103, Q203 | 3S002371 | TR, 2SC5395-T12-F |
| Q104, Q204 | 3S002371 | TR, 2SC5395-T12-F |
| Q105, Q205 | 9163021320 | TR, 2SA1048GR |
| Q106, Q206 | 9163021320 | TR, 2SA1048GR |
| Q301, Q401 | S0039452 | TR, 2SA1084E |
| Q302, Q402 | S0039452 | TR, 2SA1084E |
| Q303, Q403 | 3S002371 | TR, 2SC5395-T12-F |
| Q304, Q404 | 3S002371 | TR, 2SC5395-T12-F |
| Q305, Q405 | 9163021320 | TR, 2SA1048GR |
| Q306, Q406 | 9163021320 | TR, 2SA1048GR |
| Q501, Q601 | S0039452 | TR, 2SA1084E |
| Q502, Q602 | S0039452 | TR, 2SA1084E |
| Q503, Q603 | 3S002371 | TR, 2SC5395-T12-F |
| Q504, Q604 | 3S002371 | TR, 2SC5395-T12-F |
| Q505, Q605 | 9163021320 | TR, 2SA1048GR |
| Q506, Q606 | 9163021320 | TR, 2SA1048GR |
| Q701, Q801 | S0039452 | TR, 2SA1084E |
| Q702, Q802 | S0039452 | TR, 2SA1084E |
| Q703, Q803 | 3S002371 | TR, 2SC5395-T12-F |
| Q704, Q804 | 3S002371 | TR, 2SC5395-T12-F |
| Q705, Q805 | 9163021320 | TR, 2SA1048GR |
| Q706, Q806 | 9163021320 | TR, 2SA1048GR |
| Q807 | 3S006702 | FET, 2SK117BL (TPE2) |
| SW1-SW3 | 3E021670 | SLIDE SW, SW2-2 SSSF H9 |
| U1-U4 | 3S004860 | IC NJM4580L (SIP) |

SELECT FW PCB ASSY

| REF. NO. | PARTS NO. | DESCRIPTION |
|----------|-------------|--------------------------|
| | *E95162400A | PCB ASSY SELECT FW |
| | | PCB, SELECT FW |
| D1, D2 | 9174027720 | LED, SLR-332MG T32 (GRN) |
| D3, D9 | 9174027620 | LED, SLR-332DU T32 (ORG) |
| D4, D6 | 3E021602 | LED, SLR-342VR TC7 |
| D5, D11 | 3E021622 | LED, SLR-342MG TC7 |
| D7, D8 | 9174027720 | LED, SLR-332MG T32 (GRN) |
| D10, D12 | 3E021602 | LED, SLR-342VR TC7 |
| D13, D14 | 9174027720 | LED, SLR-332MG T32 (GRN) |
| D15, D21 | 9174027620 | LED, SLR-332DU T32 (ORG) |
| D16, D18 | 3E021602 | LED, SLR-342VR TC7 |
| D17, D23 | 3E021622 | LED, SLR-342MG TC7 |
| D19, D20 | 9174027720 | LED, SLR-332MG T32 (GRN) |
| D22, D24 | 3E021602 | LED, SLR-342VR TC7 |
| D25, D26 | 9174027720 | LED, SLR-332MG T32 (GRN) |
| D27, D33 | 9174027620 | LED, SLR-332DU T32 (ORG) |
| D28, D30 | 3E021602 | LED, SLR-342VR TC7 |
| D29, D35 | 3E021622 | LED, SLR-342MG TC7 |
| D31, D32 | 9174027720 | LED, SLR-332MG T32 (GRN) |
| D34, D36 | 3E021602 | LED, SLR-342VR TC7 |
| D37, D38 | 9174027720 | LED, SLR-332MG T32 (GRN) |
| D39, D45 | 9174027620 | LED, SLR-332DU T32 (ORG) |
| D40, D42 | 3E021602 | LED, SLR-342VR TC7 |
| D41, D47 | 3E021622 | LED, SLR-342MG TC7 |
| D43, D44 | 9174027720 | LED, SLR-332MG T32 (GRN) |
| D46, D48 | 3E021602 | LED, SLR-342VR TC7 |
| D49-D88 | 3S000241 | D1, 1SS133 T-77 |
| P1 | E00771900A | HARNES ASSY, MAI-SEL |
| Q1-Q6 | 9163018420 | DTR, DTC123ES |
| SW1-SW8 | 3E021640 | ENCODER, EC12E24104A6 |
| SW9-SW32 | 9136003020 | TACT SW EVQ11L05R |

POWER FW PCB ASSY

| REF. NO. | PARTS NO. | DESCRIPTION |
|----------|-------------|---|
| | *E95162920A | PCB ASSY, POWER FW T/C [J. US/C] |
| | *E95162950A | PCB ASSY, POWER FW EUR [E. UK. A. K] |
| | | PCB, POWER FW |
| C7, C8 | △ 3C020910 | CE, 390UF250V 105/3000H |
| C19 | △ 3C020930 | CE, 5600UF10V 105/2000H |
| C23-C25 | △ 3C020842 | CE100U10V105/1000HP=5MMTP |
| C32, C33 | △ 3C020920 | CE, 470UF25V 105/2000H |
| C40 | △ 3C020930 | CE, 5600UF10V 105/2000H |
| C47 | △ 3C020940 | CE, 680UF16V 105/2000H |
| C53 | △ 3C020882 | CE22U100V105/2000HP=5MMTP |
| D2 | △ 3S007520 | ZDI, BRIDGE 6A 600V D3SB60 |
| D3 | 3S007570 | DI, UFAST 0.7A 1000V RG-1C |
| D5 | 3S033534 | ZDI, UDZS18B |
| D6 | 3S007544 | DI, SCHOTTKY 1A40V SFPB-54 |
| D7, D9 | 3S007590 | DI, UFAST 1.5A 200V EL-1Z |
| D8, D18 | △ 3S007530 | DI, SCHOTTKY 10A40V FMB24L |
| D10 | 9174019810 | LED, GL3PR8 |
| D11, D12 | △ 3S007560 | DI, SCHOTTKY 3.5A90V RK-49 |
| D13, D14 | 3S007590 | DI, UFAST 1.5A 200V EL-1Z |
| D15, D16 | 3S007544 | DI, SCHOTTKY 1A40V SFPB-54 |
| D17, D20 | 3S007590 | DI, UFAST 1.5A 200V EL-1Z |
| D19 | △ 3S007550 | DI, SCHOTTKY 3.5A60V RK46 |
| D21 | △ 3S007580 | DI, UFAST 0.7A 400V EG-01 |
| L10 | 3E021800 | COIL, 47UA 0.95A LF236A |
| L11 | 3E021790 | COIL, 470UH 0.3A LF177B |
| L4, L9 | 3E021760 | COIL, 10UH 3.6A LF175B |
| L5 | 3E021770 | COIL, 15UH 1.6A LF235A |
| L6, L7 | 3E021780 | COIL, 220UH 1.1A LF173B |
| L8 | 3E021840 | MAG AMP, ZXP0006-3L5 |
| P3 | △ 3E024990 | CONNECT, 3P A3963WR WHT |
| P4 | 3E023250 | CONNECT, 9P A2502WV WHT |
| P5 | 3E023260 | CONNECT, 10P A2502WV WHT |
| P6 | 3E023200 | CONNECT, 4P A2502WV WHT |
| Q1 | △ 3S009010 | FET, 2SK2611 |
| Q2 | 3S009020 | TR, 2SA1244Y |
| Q3-Q5 | 3S003124 | TR, 2SC2412K T146Q |
| R1 | △ 3E021850 | POWER THERMISTOR, 16D-13 |
| R2 | △ 3R006384 | RM, 1/10W 2.2K OHM J 0603 |
| R7 | △ 3R021340 | RN, WIRE-WOUND 2W0.330HM J |
| R10 | △ 3R014244 | RM, 1/2W 470 OHM J 2010 |
| R14 | △ 3R014004 | RM, 1/2W 47 OHM J 2010 |
| R22, R25 | △ 3R006064 | RM, 1/10W 100 OHM J 0603 |
| R31 | △ 3R014084 | RM, 1/2W 100 OHM J 2010 |
| R33 | △ 3R014204 | RM, 1/2W 330 OHM J 2010 |
| T1 | △ 3E021870 | TRANS, ZXP0006-3T1B |
| U1 | △ 3S007640 | IC, FA5511P |
| U2, U6 | 3S007634 | IC, AN1431M SMT |

POWER FW PCB ASSY

| REF. NO. | PARTS NO. | DESCRIPTION |
|----------|------------|----------------------------|
| U3 | 3S007620 | IC, 3.3V 1A UPC2933HF |
| U4 | 3S007610 | IC, 12V 1A UPC2412AHF |
| U5 | 3S003030 | IC, NJM7912FA |
| U7 | △ 3S000650 | IC, NJM7805FA |
| U8 | △ 3S007660 | IC, PHOTOCOUPLER, PC123Y22 |
| U9 | △ S0052000 | PC814X |

CAUTION

Difference of a POWER FW PCB Assy.

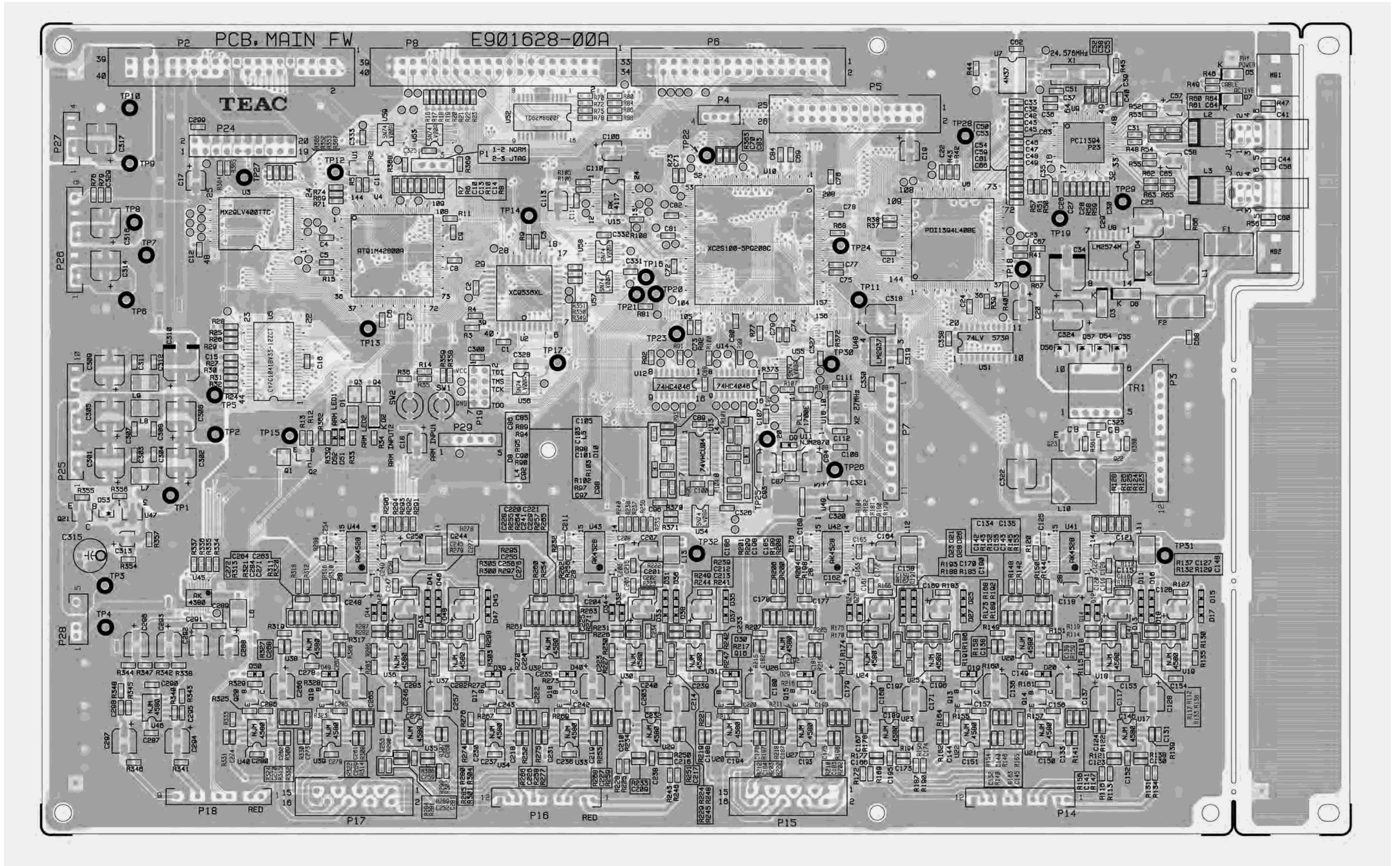
PCB ASSY, POWER FW T/C [J.US/C]

| | |
|----|---------------------------|
| R3 | No Mount |
| W1 | 3R003481 JUMPER RES, 10MM |
| W2 | 3R003541 JUMPER RES, 15MM |

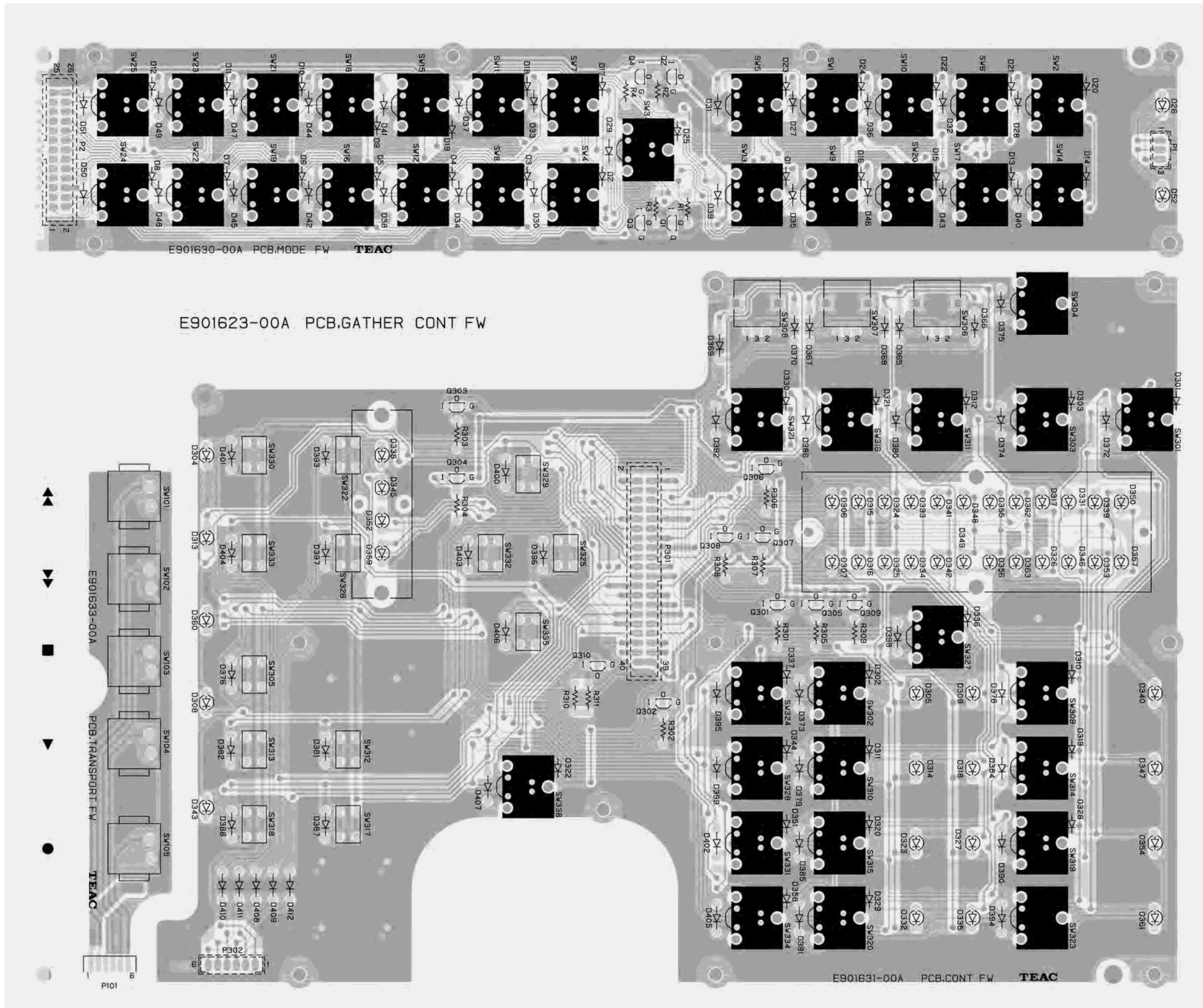
PCB ASSY, POWER FW EUR [E.UK.A.K]

| | |
|----|-------------------------------------|
| R3 | 3R018790 RN, METAL OXIDE5W 27KOHM J |
| W1 | No Mount |
| W2 | No Mount |

MAIN FW PCB



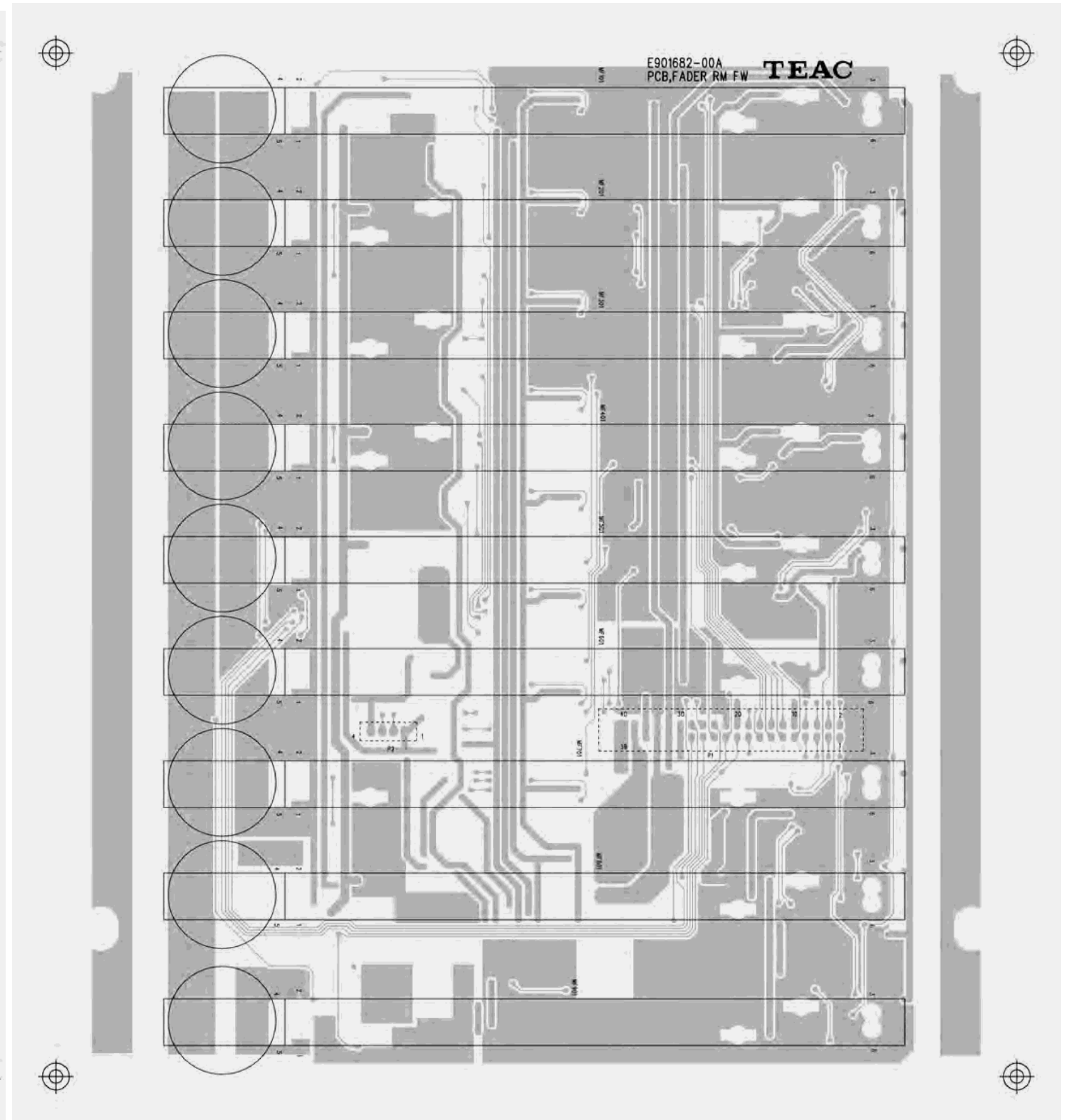
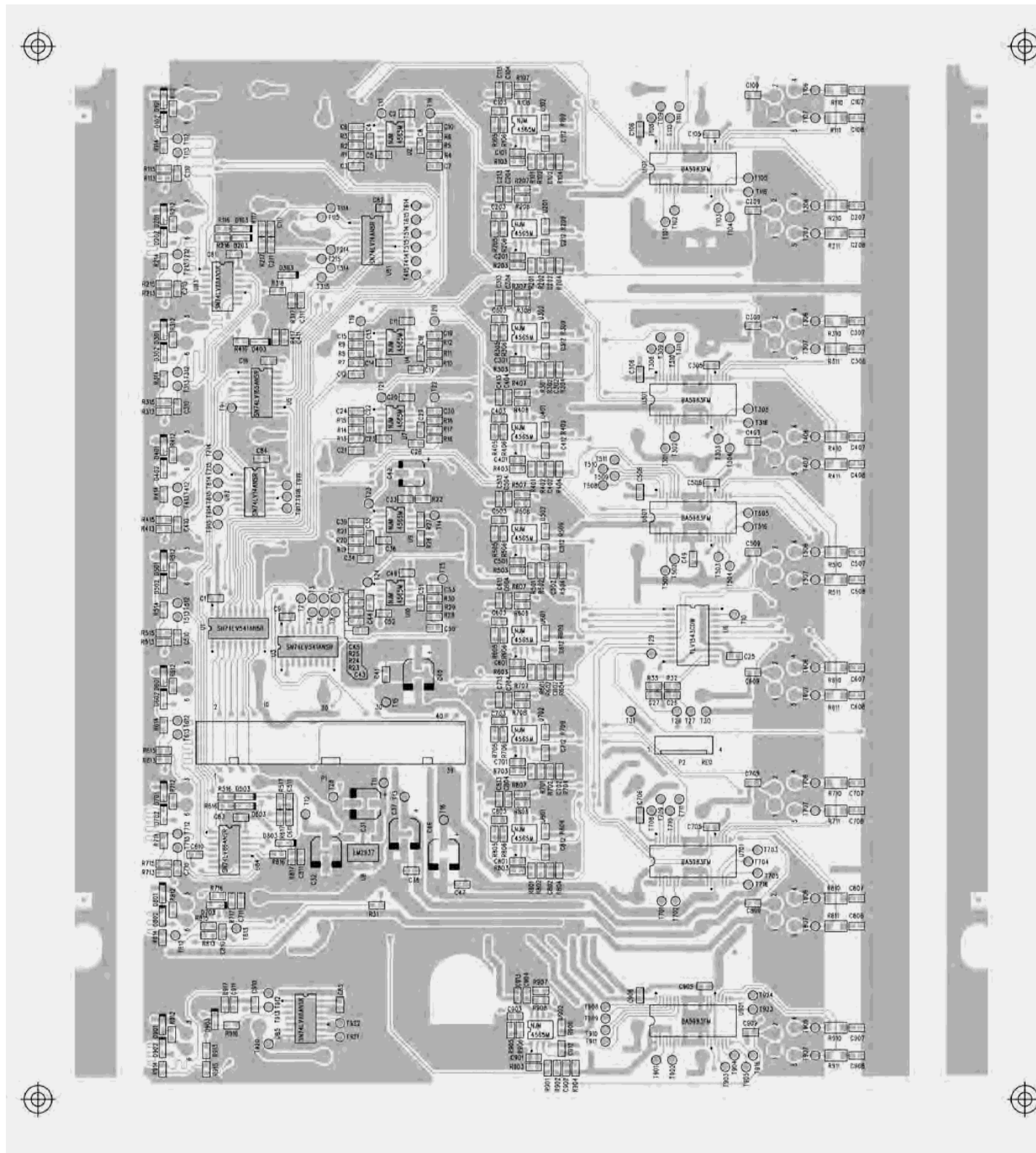
GATHER CONT FW PCB (CONT FW PCB, MODE FW PCB , TRANSPORT PCB)



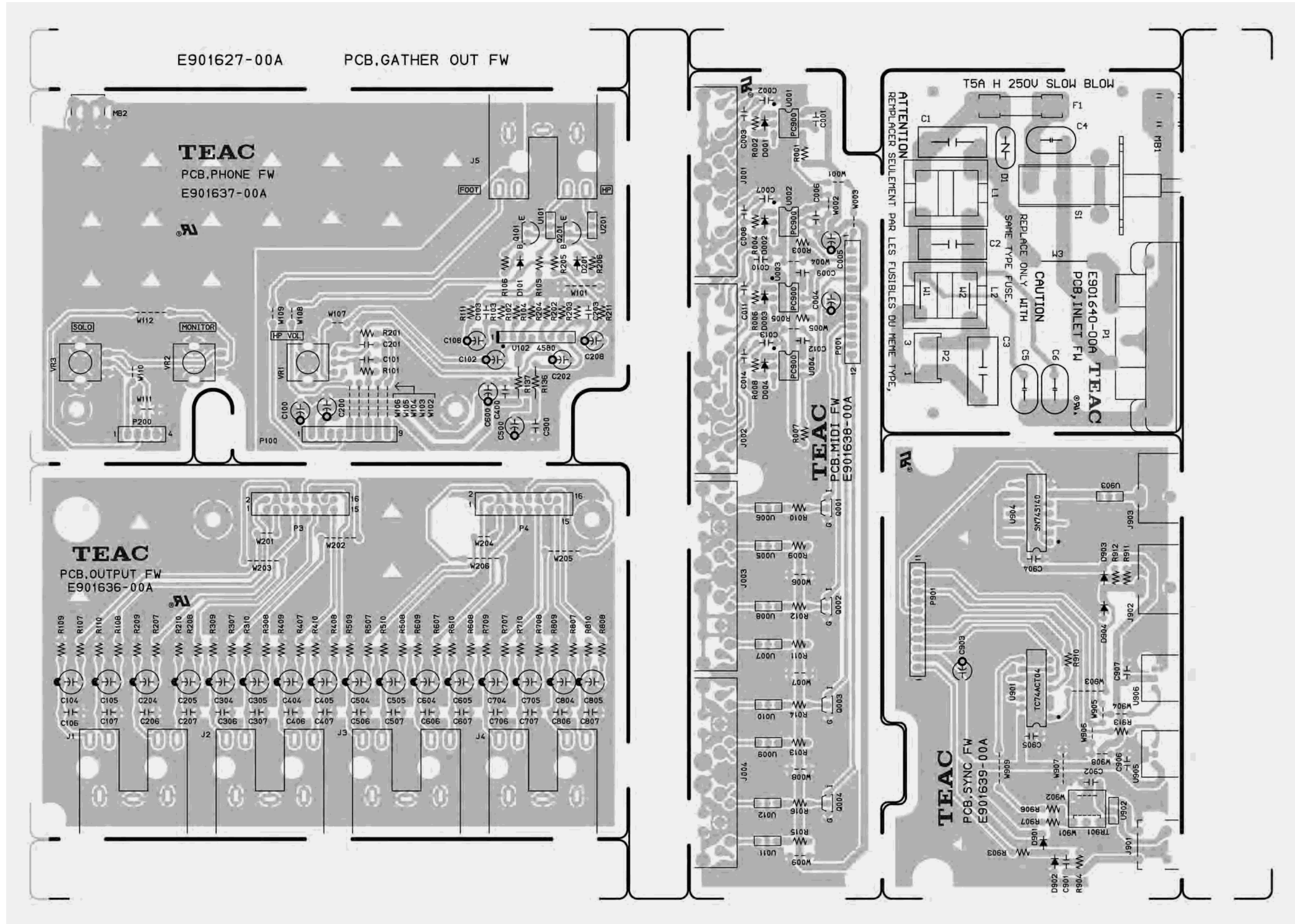
FADER FW PCB

BOTTOM SIDE

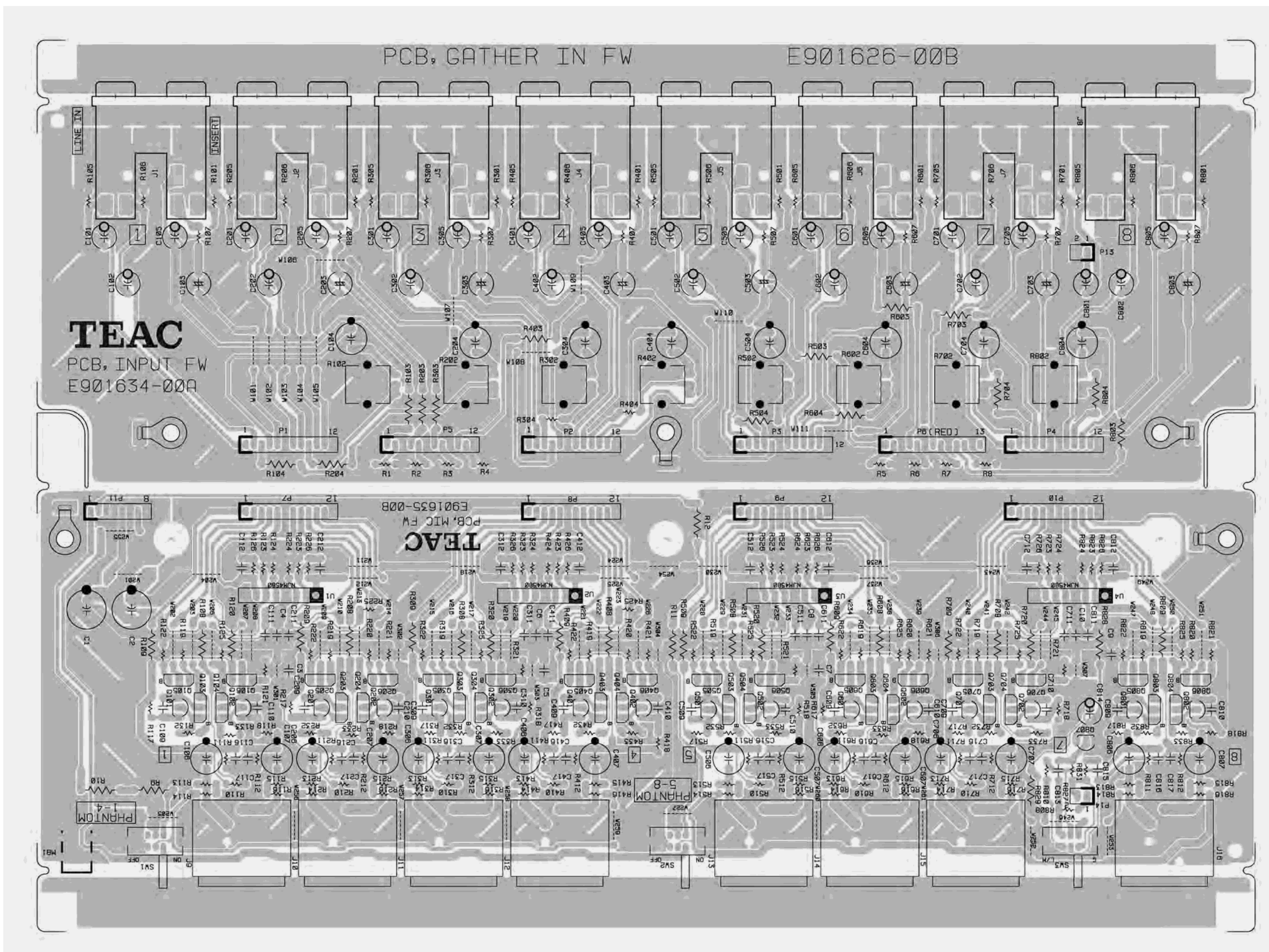
TOP SIDE



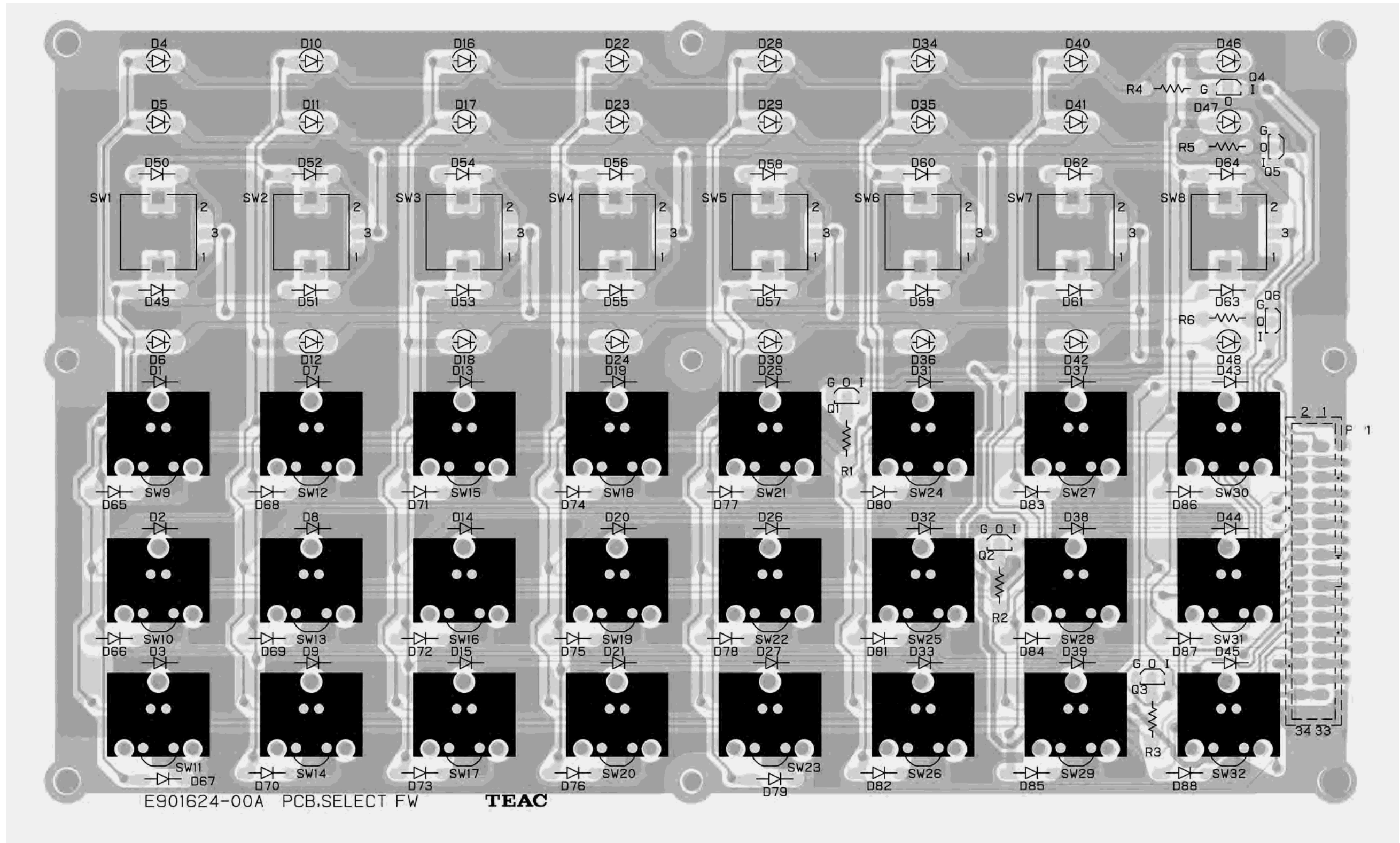
GATHER OUT FW PCB (PHONE FW PCB, OUTPUT FW PCB, MIDI FW PCB, INLET FW PCB, SYNC FW PCB)



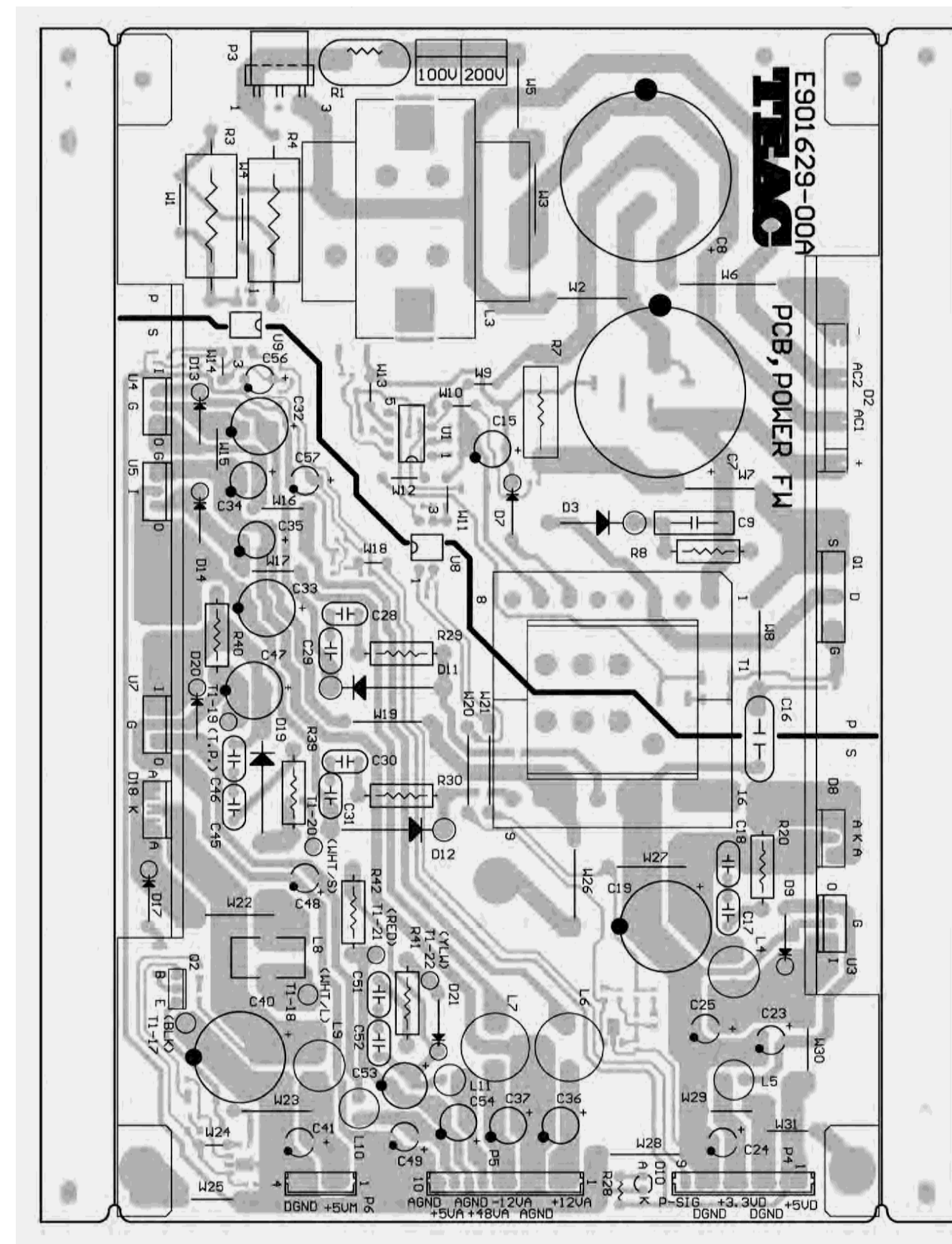
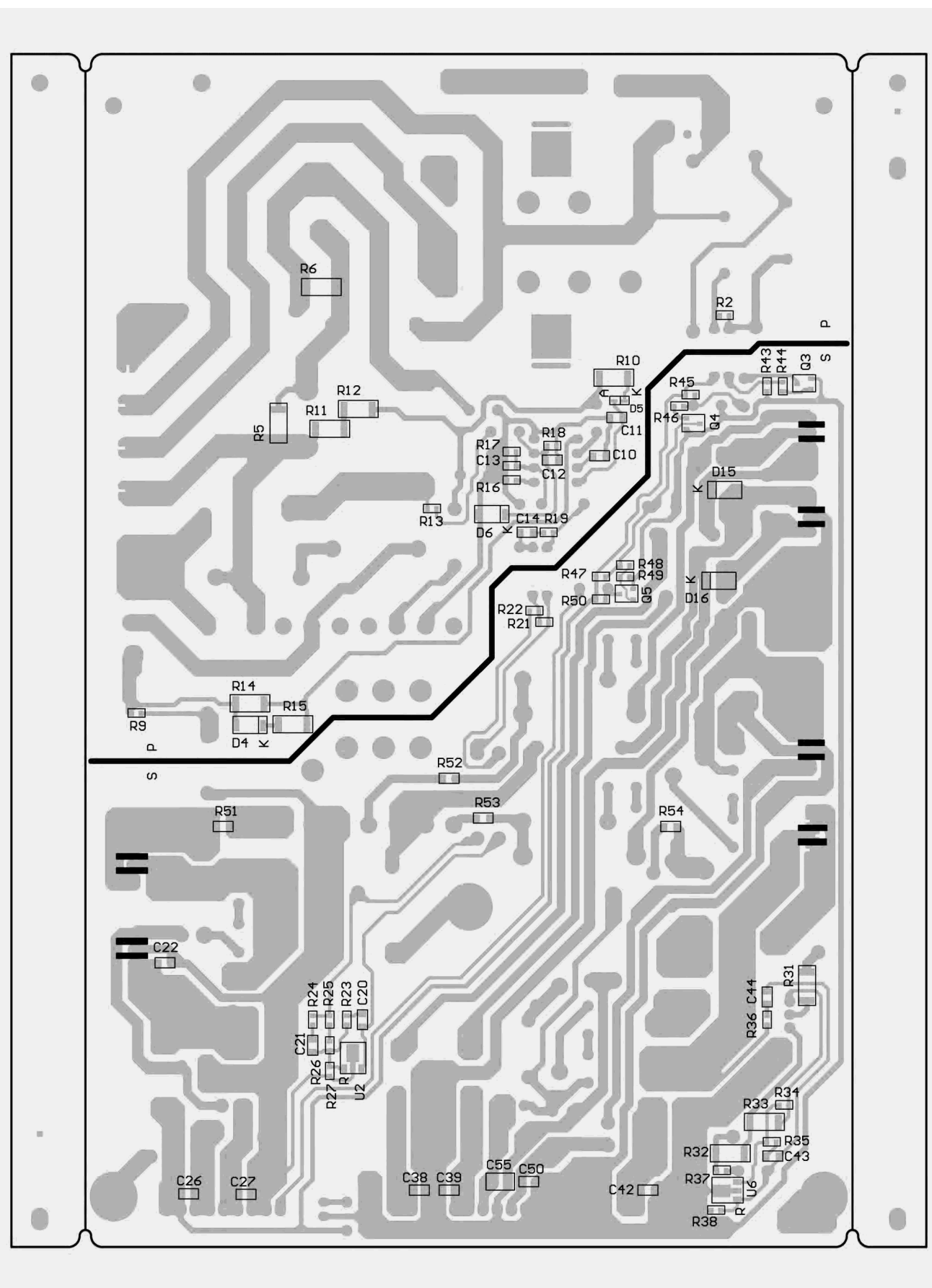
GATHER IN FW PCB (INPUT FW PCB, MIC FW PCB)



SELECT FW PCB



POWER FW PCB



6. INCLUDED ACCESSORIES

付属品

INCLUDED ACCESSORIES

| REF. NO. | PARTS NO. | DESCRIPTION | REMARKS |
|----------|------------|---------------------------|---------------------|
| | D00731400A | OWNERS MNL, FW1884 J | [J] |
| | D00731500A | OWNER'S MNL, FW1884E | [US/C. E. A. UK. K] |
| | D00756600A | OWNERS MNL, SET UP FW J | [J] |
| | D00756700A | OWNER'S MNL, SET UP FW E | [US/C. E. A. UK. K] |
| | D00756800A | OWNER'S MNL, SET UP FW F | [E] |
| | D00757000A | OWNER'S MNL, SET UP FW G | [E] |
| | D00757100A | OWNER'S MNL, SET UP FW I | [E] |
| | M01727700A | SLEEVE, CD | |
| | T00104200A | DISC FW1884 | |
| | T00096800A | DISC, CD-ROM G1GA24B | |
| | 3D0068700A | QUICK START GUIDE (F) X-9 | |
| | △ 3E014140 | POWER CORD, DM | [J] |
| | △ 3E014150 | POWER CORD, UL | [US/C,] |
| | △ 3E014160 | POWER CORD, EUR | [E, K] |
| | △ 3E014170 | POWER CORD, UK | [UK] |
| | △ 3E014180 | POWER CORD, AUS | [A] |